



PERFECT BITES

Predictably



ABSOLUTE BITE JIGS, YOUR GUARANTEE TO PREDICTABLE CROWN DELIVERIES!

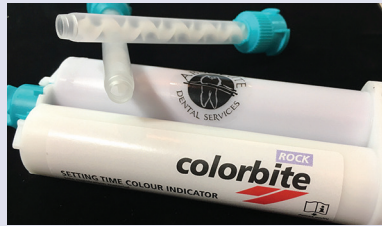
Traditionally a bite has been seen only as a mounting indicator. Using a bite jig in lieu of, or in combination with, a traditional bite allows for exceptional crown occlusion control. As a horizontal positioning and vertical clearance indicator, these jigs are used to set the bite and equilibrate the models. The jig acts as reference between vertical clearance at time of preparation and model mounting before fabrication.

UTILIZING THESE JIGS CORRECTLY CAN GUARANTEE PREDICTABLE CROWN OCCLUSION EVERY TIME!

CLINICAL PROCESS



Finalize preparation and temporary crown before fabricating bite jig.



Absolute suggested jig material. Purchase single cartridges from Absolute or bulk packages from your supplier. Cartridges fit most impression guns. One cartridge can take between 40 - 80 single bite jigs.



Extrude an "ice cream cone" shape only on the prepped tooth, paying attention not to allow material to flow onto adjacent teeth.



This material sets within 10 seconds after mixing in the tip. It is very important to have the patient bite down immediately before setting occurs.

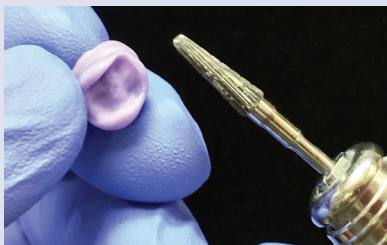


It is extremely important not to have any bite material on the adjacent occlusal tables. The purpose of a bite jig is to index the vertical clearance between the prep and opposing occlusion.



PLACE BITE JIG IN SEPARATE BAG OR OLD CROWN CASE AND MARK "BITE JIG". A detailed imprint of the opposing tooth and occlusal prep surface assists with accurate lab mounting and equilibration of the models.

LABORATORY PROCESS

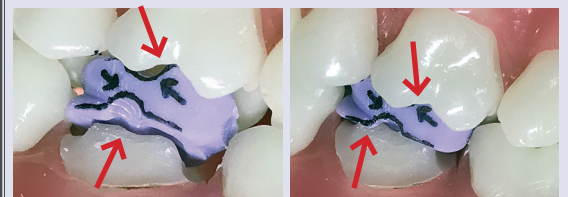


The lab will wafer the bite jig to allow for model seating by eliminating undercuts.



The lab will cut two facial windows to allow for visual seating of the prepared tooth and opposing.

Model Equilibration



Before

After

The model is now equilibrated until full seating is achieved and visually verified.

COMMUNICATION AND USES

Lab

- Jig is used to equilibrate models, verify mounting, crown height & thickness in QC process, allowing for more predictable deliveries with less adjustments.

Clinical

- Jig is used to verify temp fabrication accuracy, possible temp material wear, and tooth drifting or supra-eruption.
- Before seating crown, remove temporary and place jig in mouth. If patient feels the jig is high in occlusion, tooth drifting or supra-eruption can be confirmed before delivery of the final crown.

SIMPLIFYING CROWN DELIVERIES

www.AbsoluteDentalLab.com