



A CLINICIAN'S GUIDE TO FULL ARCH FROM SURGERY TO FINAL

NAVIGATION PRECISION GUIDANCE®



SYNERGY PLUS GUIDED WORKFLOW

*Synergetic workflow from diagnostically planned guided surgery,
chairside conversions to final prosthetics*



Dear Doctor,

Since the inception of the All-on-Four® hybrid concept, we have seen a true evolution in the way we restore the edentulous arch.

Being able to extract a patient's teeth, place implants and have them wake up a few hours later with a fixed prosthesis, is a key factor in patient acceptance. Unfortunately, this chairside conversion process has been the most unpredictable, expensive and challenging part of this procedure. Furthermore, the conversion denture, in most cases, was nothing more than an "emergency device" with occlusion and esthetics a secondary consideration.

Today's technology is allowing the technical, restorative and surgical teams to come together starting at the planning phase. We now have the ability to plan our surgical cases with a true, transferable, digital diagnostic wax-up. Superimposing this wax-up onto actual patient pictures assists in patient approval and allows us to place implants based on the final prosthesis, not a pre-op or existing denture tooth position. Once patient approval is received, we process the entire case within the parameters set by the approved wax-up.

Absolute's in-house surgical planning software is allowing our pre-planning team to assist the surgeon with model matching, DICOM clean-up, suggested bone-reduction as well as proposed implant placement. This saves the clinician time and renders unnecessary the need to learn how the software functions.

After pre-planning is completed, a review is scheduled allowing the technical, restorative and surgical teams to fine tune the plan for final guide design and printing.

Our NavaGation Synergy Guided Workflow® now allows for a true all-encompassing process; from diagnostic planning, tooth down implant placement, guided surgery with chairside immediate latched conversion to the final prosthetic solution.

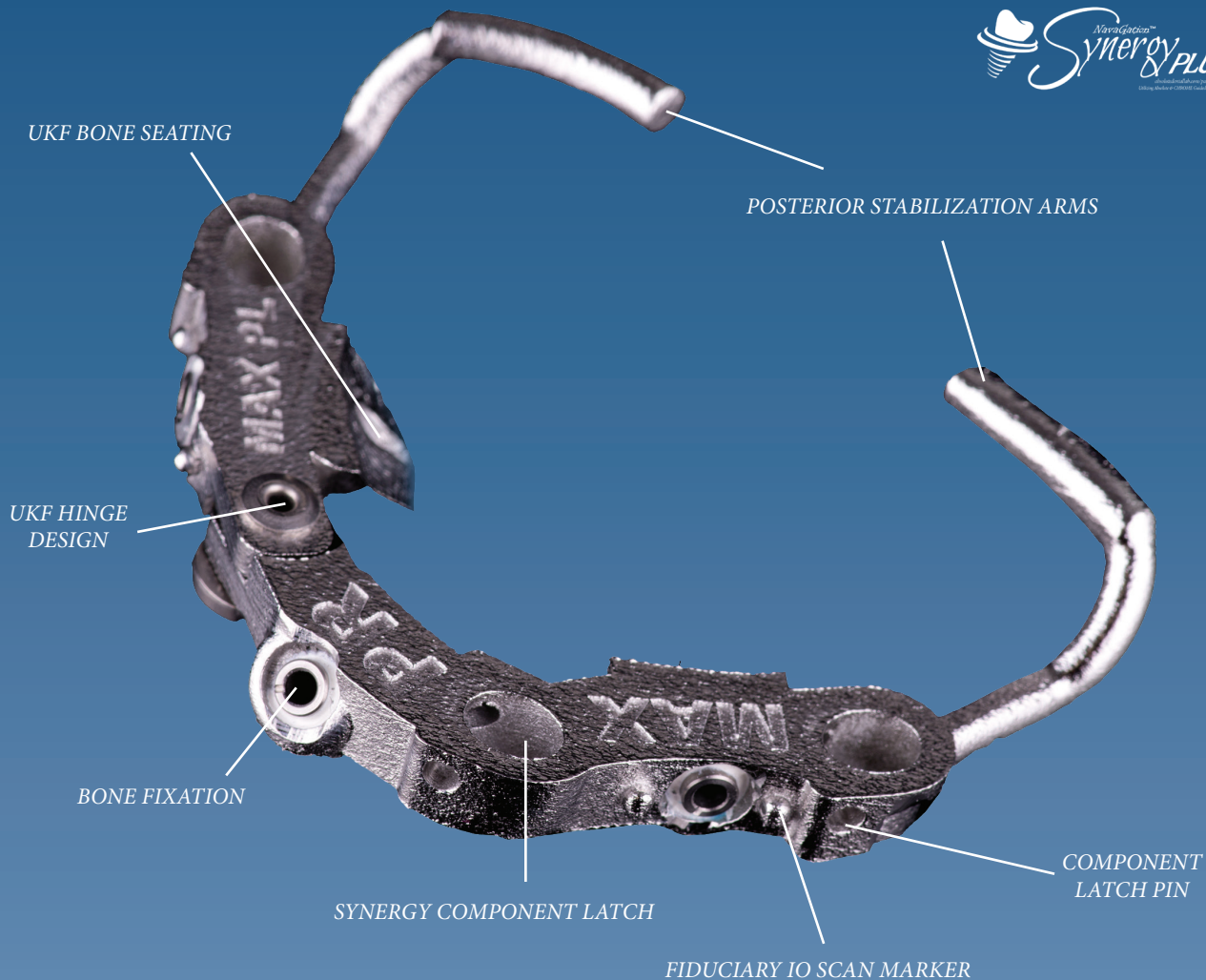
I invite you to restore your next case with us!

Conrad J. Rensburg



Conrad J. Rensburg
N.D. & N.H.D. Tech Pret.

Synergy Plus Foundation Guide



FAST AND ACCURATE SEATING BASE GUIDE

The UKF (Unilateral Key Fixation) base guide is fixated on only two 10x12mm reflected areas. It is stabilized by a tooth / bone or denture based aligner for faster and more accurate seating. This extremely accurate, dual verified, bone and tooth aligned seating, allows for a streamlined and efficient chairside conversion process.

TRUE SEQUENTIAL WORKFLOW

A true sequential workflow allows the surgeon to complete the Synergy surgery without the need to check occlusion. The conversion process is guided by the accurate seating of the UKF guide and not by closing the patient into occlusion by hand with a nose-chin measured vertical. In case of a dual arch the entire case is surgically sequenced and not converted one arch at a time. In documented "simple cases" a dentate single arch case (surgery to conversion) is regularly processed in 120 to 160 minutes, while the conversion process is reduced to between 20 and 30 minutes. Dual arch cases are regularly processed with our team in 4 hours or less.

SYNERGETIC LINK FROM SURGERY TO FINAL

The Synergy Guided Workflow® creates a predictable link between the surgical plan, converted PMMA, prototype and the final prosthesis. All cases are planned from the final prosthesis back to the surgical plan, this minimizes any potential restorative surprises or complications. The NavaGation Precision Guidance® Team is led by experienced technicians who ensures the Synergy workflow is designed to support the final prosthetic solution.

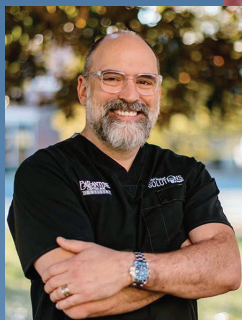
Absolute Signature A.R.T. Team



*Jack Marrano, CDT
Signature Prosthetics*



Dr. Chris Barwacz



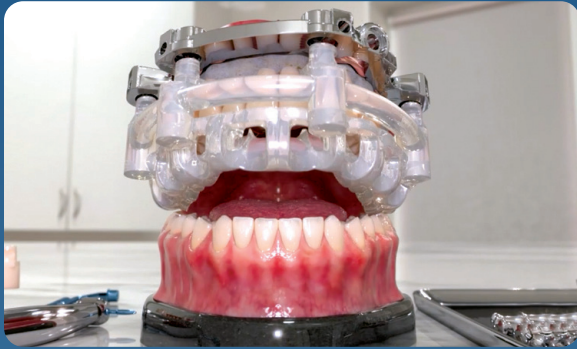
Dr. Christian Yaste



Dr. Mark Ludlow

ABSOLUTE
Signature
A.R.T TEAM

Synergy Guided Workflow® Quick Reference



LAY REFLECTION, SEAT UKF BASE GUIDE ON BONE. LATCH TOOTH ALIGNER TO DUAL VERIFY ACCURATE BASE SEATING



LATCH PINS CONFIRM ACCURATE SEATING



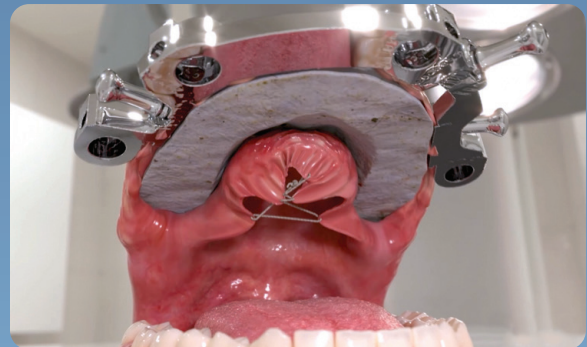
EXTRACT FIXATION SITE TEETH AS PER SURGICAL PLAN



DRILL FIXATION AND FIXATE BASE GUIDE



AFTER FIXATION, EXTRACT REMAINING TEETH

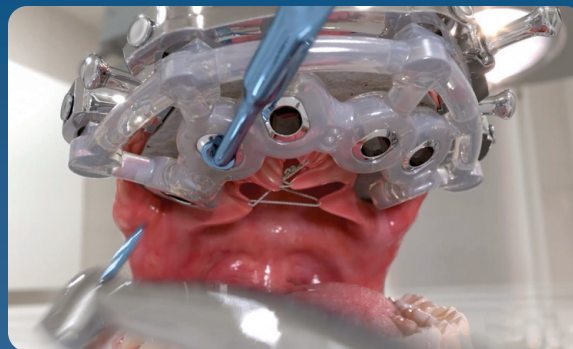


FOR FLAT BONE REDUCTION REFERENCE, USE BASE GUIDE AS REFERENCE

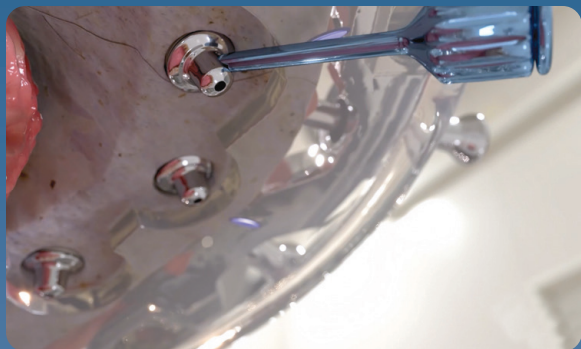




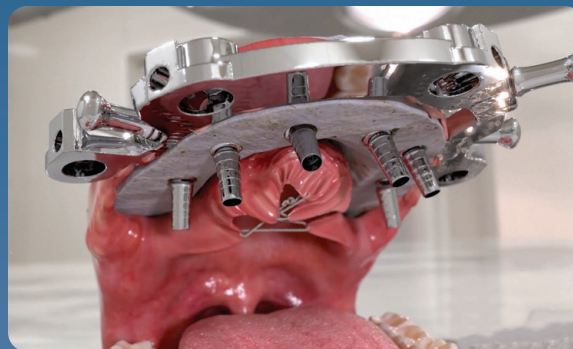
FOR SCALLOPED BONE REDUCTION REFERENCE, USE SUPPLIED BONE REFERENCE



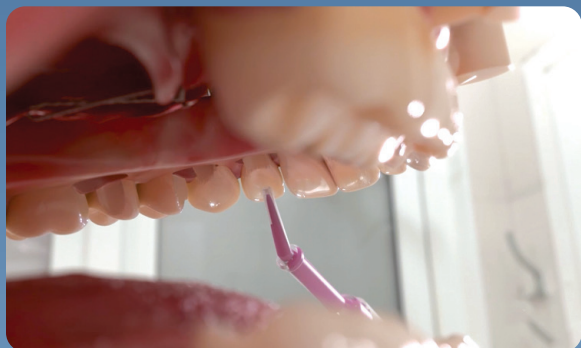
SEAT OSTEOTOMY GUIDE AND PLACE IMPLANTS AS PER THE SURGICAL PLAN



SEAT PREPLANNED MULTI-UNIT ABUTMENTS AND SET SCREW ACCESS ROTATION BY ALIGNING THE SCREWDRIVER WITH MARKS ON THE GUIDE



SEAT TEMPORARY CYLINDERS. IF DRAW IS AN ISSUE, SEAT IN SUPPLIED SEQUENCE AS PER INSTRUCTIONS ON THE CONVERSION PLAN



LATCH CONVERSION PROSTHESIS AND LUTE ALL COMPONENTS IN PLACE

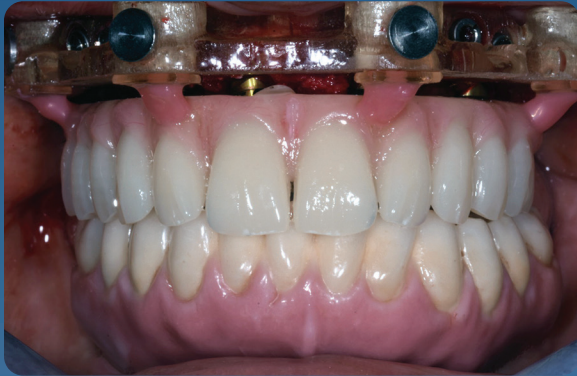


REMOVE CONVERSION PROSTHESIS. CUT LATCHES IN THE LAB. PULL FIXATION AND REMOVE BASE GUIDE. SUTURE PATIENT



REPLACE CONVERSION PROSTHESIS. FINAL CHECK OCCLUSION 48-72 HOURS AFTER SURGERY

Efficient Chairside Conversion



LATCHED CONVERSION



TEMPORARY CONVERSION PROSTHESIS



CONVERSION PROSTHESIS



PATIENT TEMPORARY SMILE



Dr. Jeffrey Ganeles



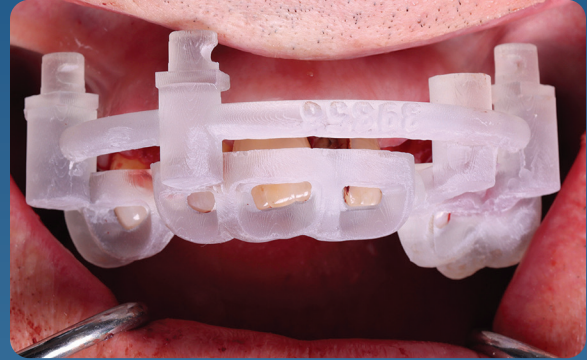
*"... I understand that patients are not coming to me to have implants, they are coming to me to replace missing TEETH."
- Scott Ganz*

Synergy Plus Protocol

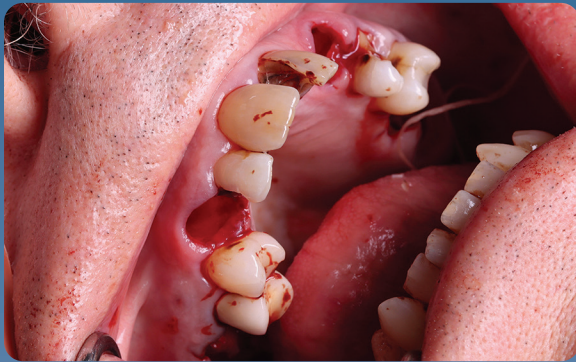
Seating the Base Guide



PRE-OP



VERIFY PASSIVE TOOTH ALIGNER SEATING
BEFORE SURGERY



PRE EXTRACTIONS TO ACCOMMODATE
FIXATION POSITIONS



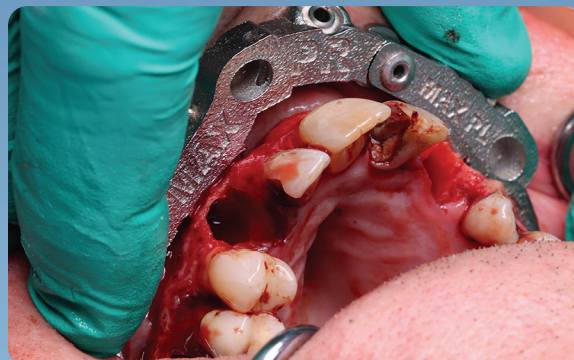
TISSUE REFLECTION - BUCCAL ONLY



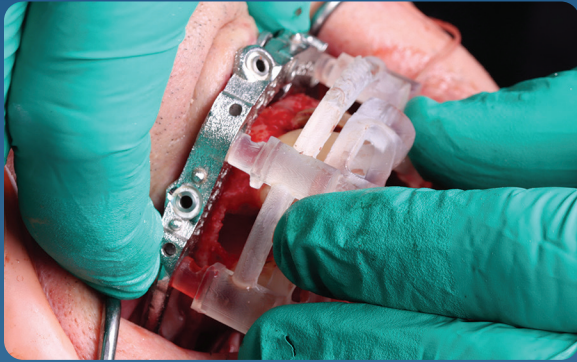
COLLAPSIBLE HINGE GUIDE - SIMPLE AND
ACCURATE SEATING



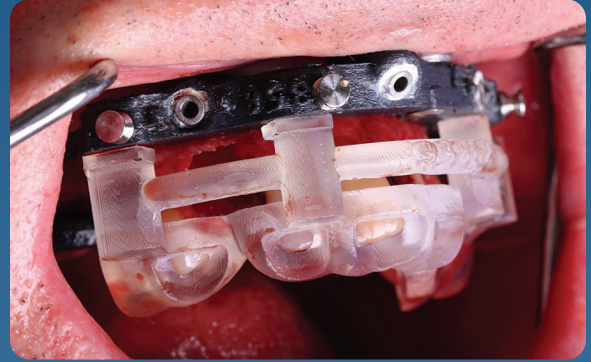
UKF HINGE GUIDE ENGAGING THE
BUCCAL UNDERCUT



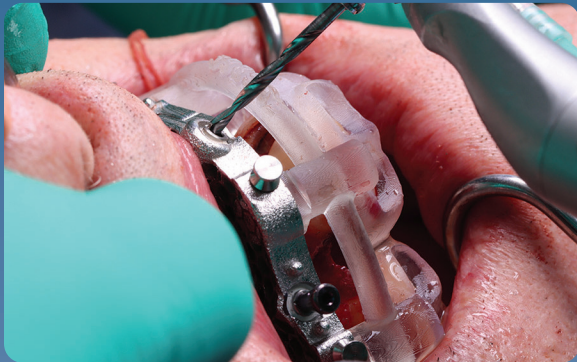
UKF SEATING VERIFIED ON BUCCAL UNDERCUT



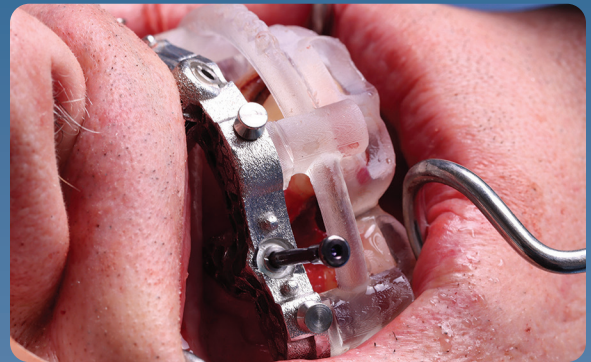
TOOTH ALIGNER ENGAGED FOR DUAL SEATING VERIFICATION



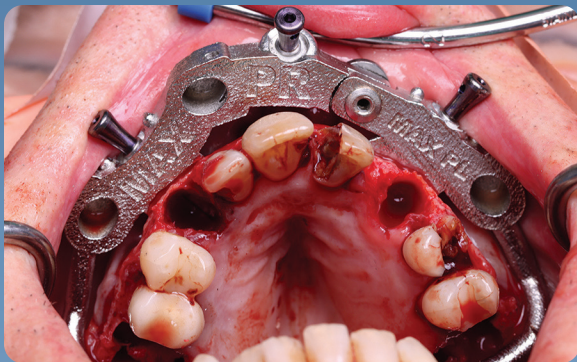
TOOTH ALIGNER & BASE GUIDE STACK READY FOR FIXATION



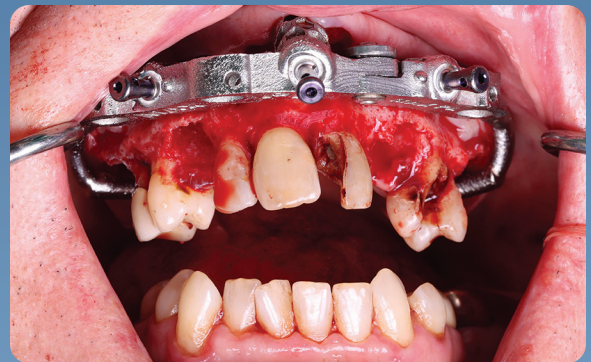
ACCURATE FIXATION BECAUSE OF DUAL SEATING VERIFICATION INTO THE UNDERCUT



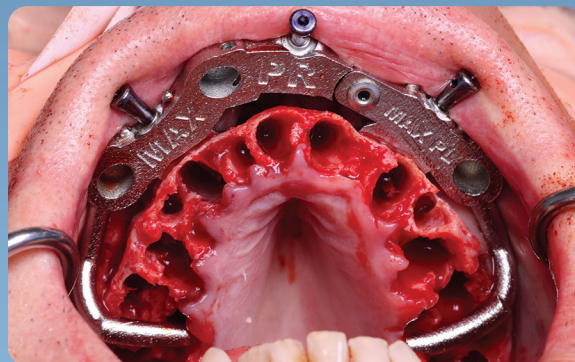
EFFICIENT BONE FIXATION PROCESS



ACCURATE BASE GUIDE SEATING



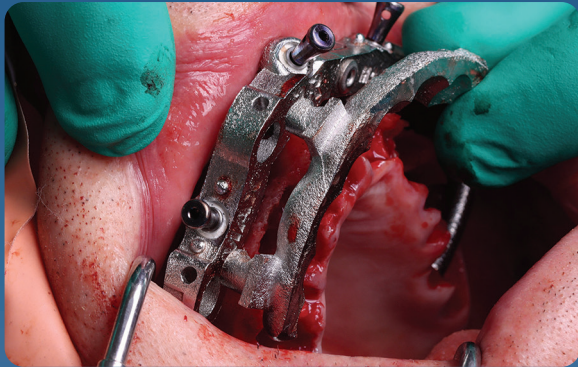
READY FOR SURGERY



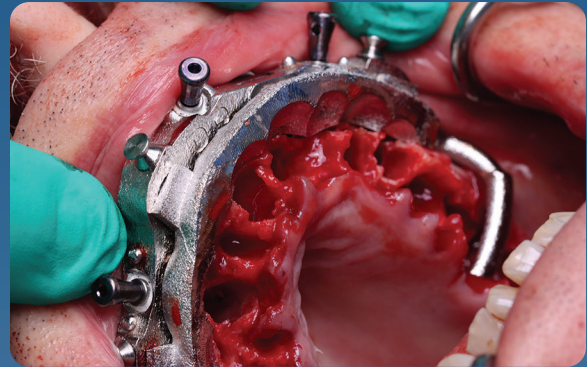
TOOTH EXTRACTIONS

Bone Plane Reference Options:

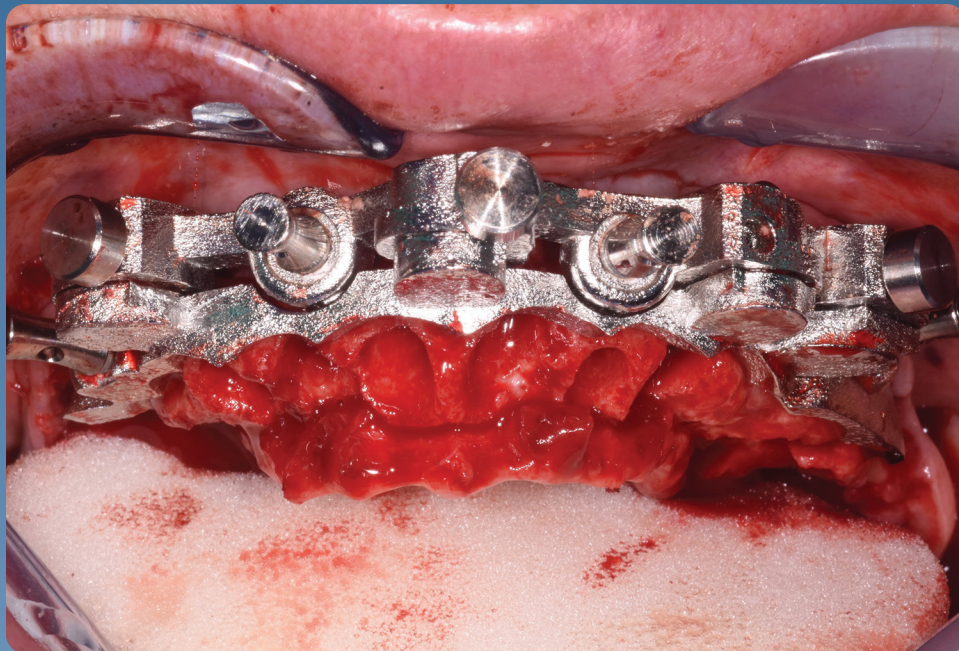
FP1 Scalloped Bone Plane



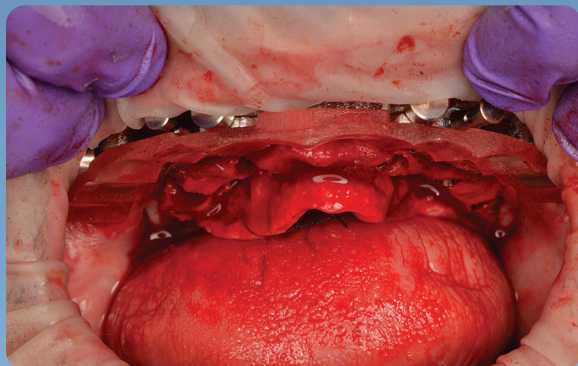
SEATING SCALLOPED BONE PLANE REFERENCE



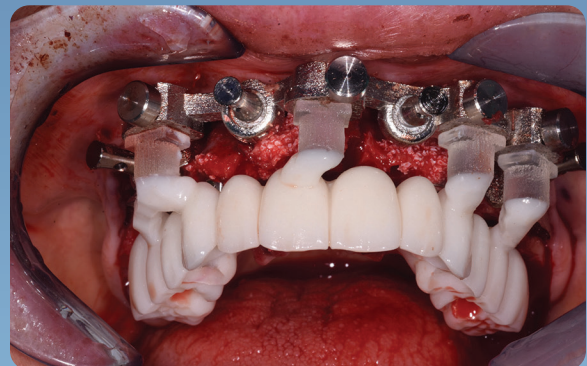
FP1 STYLE SCALLOPED BONE PLANE REFERENCE



SCALLOPING BONE REFERENCE GUIDE



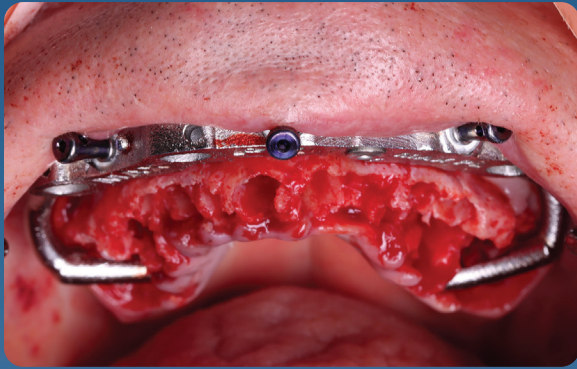
SCALLOPED BONE REDUCTION



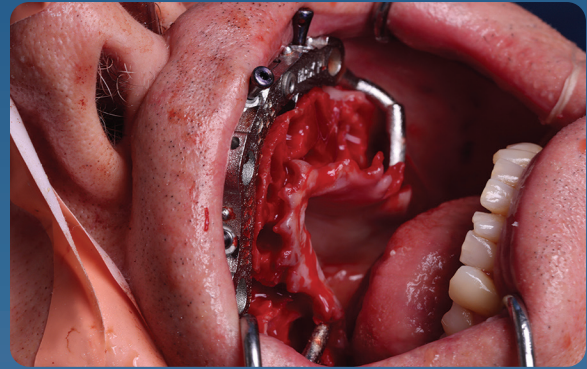
FP1 SCALLOPED CONVERSION

Bone Plane Reference Options:

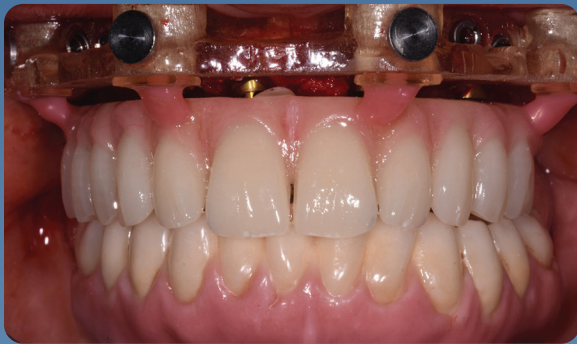
FP2 & 3 Flat Bone Plane



FP2 & 3 FLAT BONE PLANE REFERENCE



FLAT BONE PLANE



LATCHED CONVERSION



FP3 STYLE SURGICAL CONVERSION

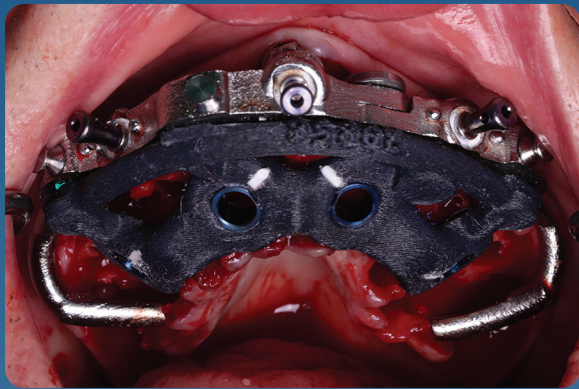


SURGICAL CONVERSION



Dr. Jeffrey Ganeles

Synergy Plus Full Arch Surgery



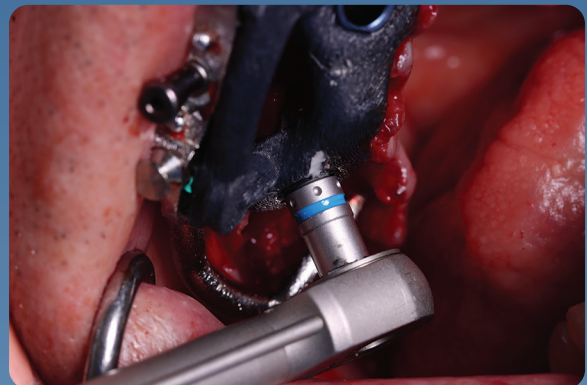
CARBON FIBER OSSEOTOMY GUIDE



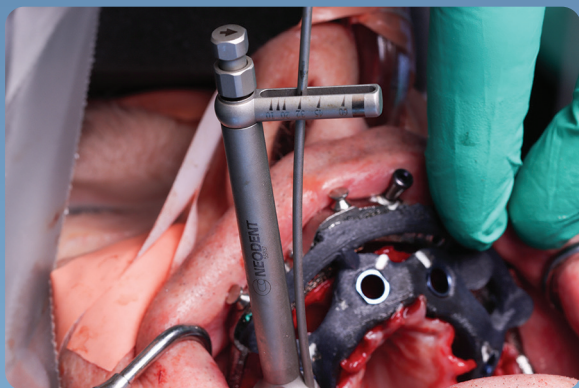
SYNERGY COMPATIBLE WITH ANY GUIDED IMPLANT SYSTEM



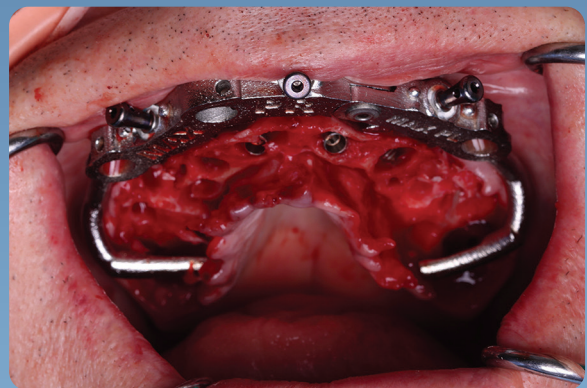
IMPLANT PLACED THROUGH GUIDE TO DEPTH AND DIRECTION



IMPLANT DELIVERED TO PLANNED ROTATION

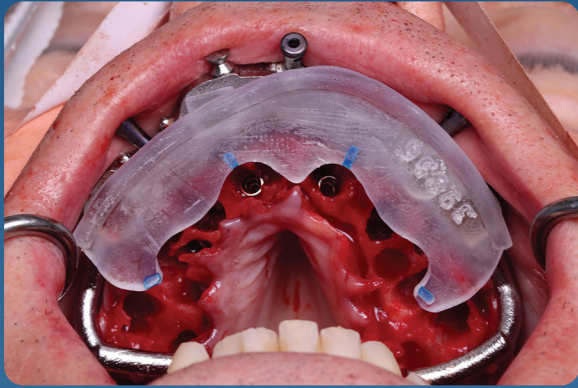


FINAL TORQUE

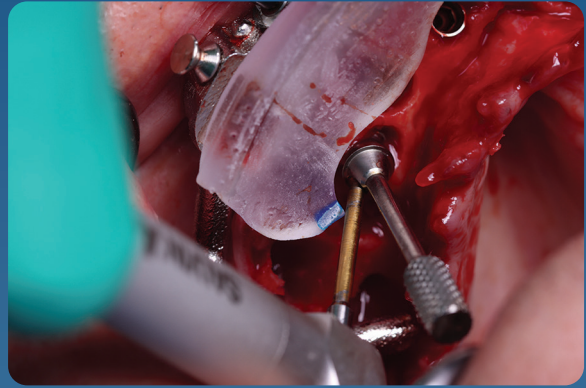


IMPLANTS PLACED

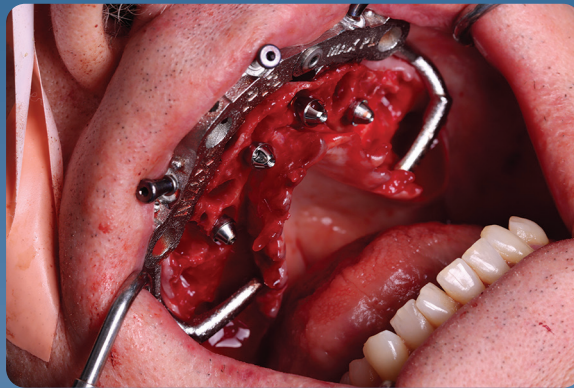
Synergy Plus Abutment Placement



MUA ABUTMENT ALIGNER



*LINE SHOWS ALIGNMENT WITH SCREW
DRIVER SHAFT*

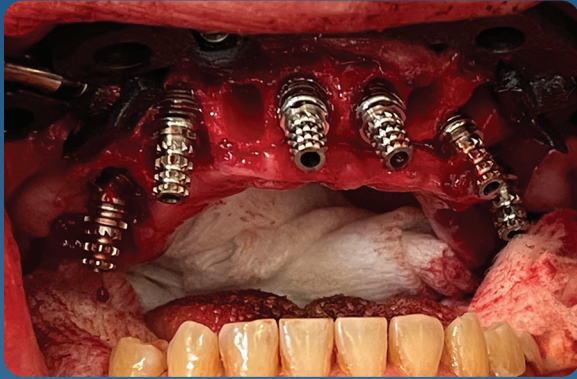


MUA ABUTMENTS IN PLANNED ROTATION



Dr. Mark Ludlow

Synergy Plus Conversion Process



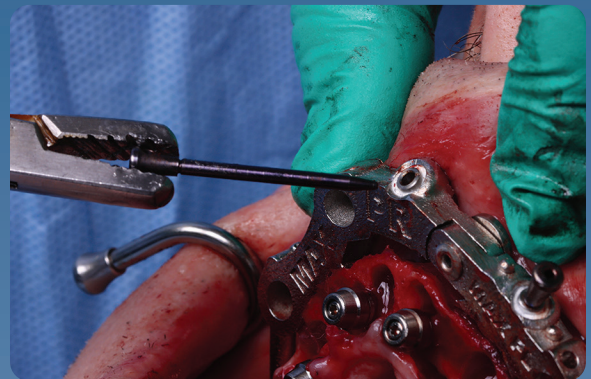
UNLATCH AND REMOVE PMMA - PLACE TEMPORARY COMPONENTS AS PER THE CONVERSION SEQUENCE



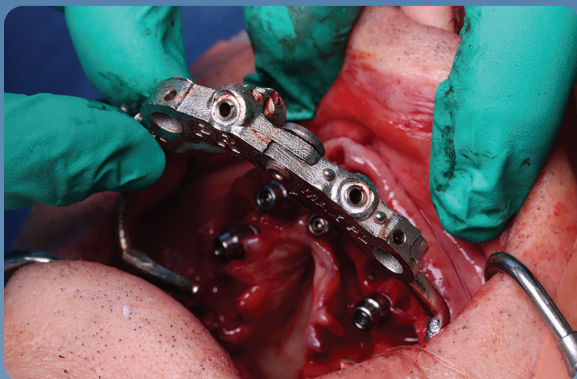
LUTE COMPONENTS INSIDE THE PMMA



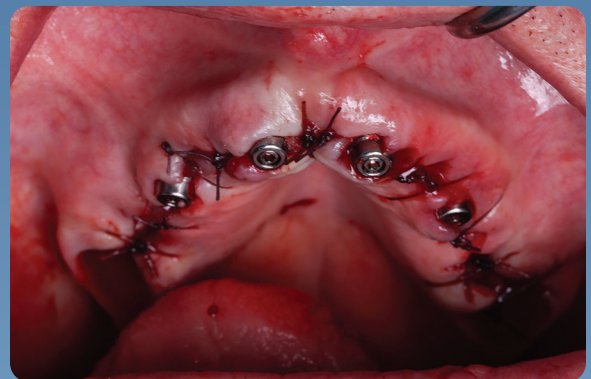
UNLATCH THE PMMA AND FILL IN THE INTAGLIO



REMOVE FIXATION PINS



REMOVE SYNERGY BASE GUIDE



SUTURE PATIENT



CUT CONVERSION LATCHES



REPLACE THE PMMA

Synergy Plus Base Guide Options



SYNERGY CARBON FIBER



SYNERGY SLM COBALT



Synergy Plus Component Identification



COBALT SLM FIXATION BASE GUIDE



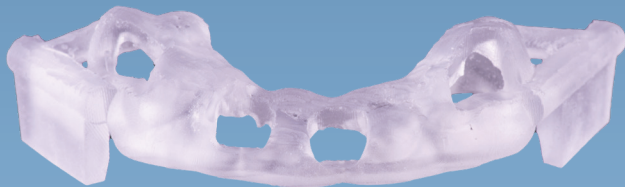
CARBON FIBER FIXATION BASE GUIDE



TOOTH ALIGNER FOR DUAL VERIFICATION OF BASE GUIDE SEATING



TOOTH ALIGNER AND BASE GUIDE STACK



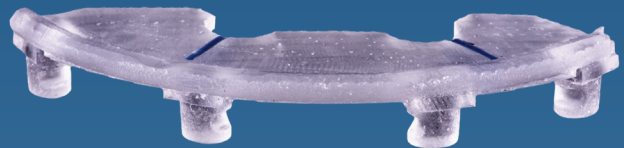
TOOTH BORNE PERIOSTEUM CLEAN-UP GUIDE



SLEEVED IMPLANT DRILL GUIDE



BASE AND DRILL GUIDE STACK



MULTI-UNIT ABUTMENT ROTATION GUIDE



MUA ROTATION AND BASE GUIDE STACK



EMERGENCY FOREVER DENTURE



CONVERSION AND BASE GUIDE STACK

Absolute Dental Lab

Established in 1994, Absolute Dental Services started as a small fixed prosthetics lab in the Triangle area of North Carolina. More than two decades later, Absolute's restorative focus is much broader but their attention to product detail and exceptional customer service has not changed. In 2019, Absolute Dental was voted NADL laboratory of the year by their peers.

Absolute is a true full-service partner, with a team nationally and internationally renowned for their expertise in creating world-class esthetics. Their use of cutting-edge technology in CAD and milling as well as their extraordinary dental implant, guided surgery and high-end removables teams, enables them to deliver lifelike and functional dental prosthetics in even the most complex cases.

Serving their customers with Absolute Excellence has always been the primary focus of the Absolute team. Their vision and dedication is reflected in the company motto, *Perfection Is Not Optional!* They welcome clinicians from all over the country to become part of the Absolute family!



NavaGation Precision Guidance® team

The NavaGation Precision Guidance® division was established in 2014 with the goal to create synergy between the surgeon, restorative and technical teams. Today, with more than 2500 guides and successful surgeries behind them, Absolute is proud to offer their expertise in diagnostic work-up, pre-planning, guide design, processing and chairside support to our clinicians.

By offering a true “prosthetic down” planning approach, our NavaGation Precision Guidance® team has become a trusted partner for surgical and restorative teams across the United States. Advancements in planning software, FDM 3D printing of materials like implantable PEEK Carbon Fiber combined with other technologies like select laser melting, has created a true synergy between the surgical plan and the final prosthetics. Having an experienced technician assist with plan set-up, team review and fabrication of the final prosthesis has proven to create a very predictable workflow.

Select Laser Melting
done exclusively by



We invite you to restore your next case with us!



1-844-NAVAGAT (628-2428)
NAVAGATION.NET



SCAN HERE