

Procedures & Products

Dental Laboratory

Brånemark System®

NobelReplace™

NobelSpeedy™

NobelPerfect®

NobelDirect®



*First from Nobel Biocare.
NobelPerfect® (NP, RP, WP), NobelDirect® (NP, RP, WP), Brånemark System®, NobelReplace™ and NobelSpeedy™ Implants. A complete assortment with FDA clearance for Immediate Function™ in all single, partial and fully edentulous restorations in the mandible and maxilla.*

Nobel Biocare AB and all production units are certified according to the Environmental Management System ISO 14001.

The procedures described herein must only be performed using components and instruments provided by Nobel Biocare.

Nobel Biocare reserves the right to make any necessary alterations to the methods and procedures stated in this manual.

Some products may not be available in all markets. Please contact your local Nobel Biocare office for current product assortment and availability.

Nobel Biocare is in compliance with
ISO 13485:2003 and Council Directive 93/42/EEC
Canadian Medical Devices Regulation



For USA only: Federal law restricts this device to sale by or on the order of a licensed dentist or physician.
All products are subject to change without notice.

Table of Contents

| | |
|---|----|
| Introduction | 4 |
| Provisional Solutions | 5 |
| Temporary Abutments and Copings | 5 |
| Immediate Provisional Implants | 6 |
| Solutions for Existing Teeth | 7 |
| Procera® Crown | 8 |
| Procera® Laminate | 10 |
| Procera® Bridge | 12 |
| Permanent Implant Restorations | 14 |
| Procera® Esthetic Abutment | 16 |
| Procera® Abutment | 17 |
| Snappy Abutment™ | 20 |
| Esthetic Abutment | 22 |
| Multi-unit Abutment | 24 |
| Abutment NobelPerfect® | 26 |
| Procera® Implant Bridge Zirconia | 27 |
| Procera® Implant Bridge Titanium | 30 |
| Single Tooth Abutment | 33 |
| Easy Abutment™ | 34 |
| GoldAdapt Engaging | 36 |
| GoldAdapt Non-Engaging | 40 |
| Overdenture Restorations | 42 |
| Gold Abutment Bar/Gold Coping Bar | 42 |
| Ball Abutment Titanium | 44 |
| Appendices | 46 |
| Terms you need to know | 46 |
| Implant/Abutment Interface Diameter | 49 |
| Abutment Selection | 50 |
| Model Techniques | 52 |
| Prosthetic Instrumentation | 57 |
| Index | 58 |

Welcome to Nobel Biocare

Nobel Biocare products are clinically well-proven dental implant systems with documented successful long-term results.

The implant-supported reconstruction is fabricated using specially developed and designed instruments and components of high precision and compatibility.

Also offered by Nobel Biocare are Procera® Personalized Esthetics, a highly esthetic product line designed for both implant and natural tooth preparation.

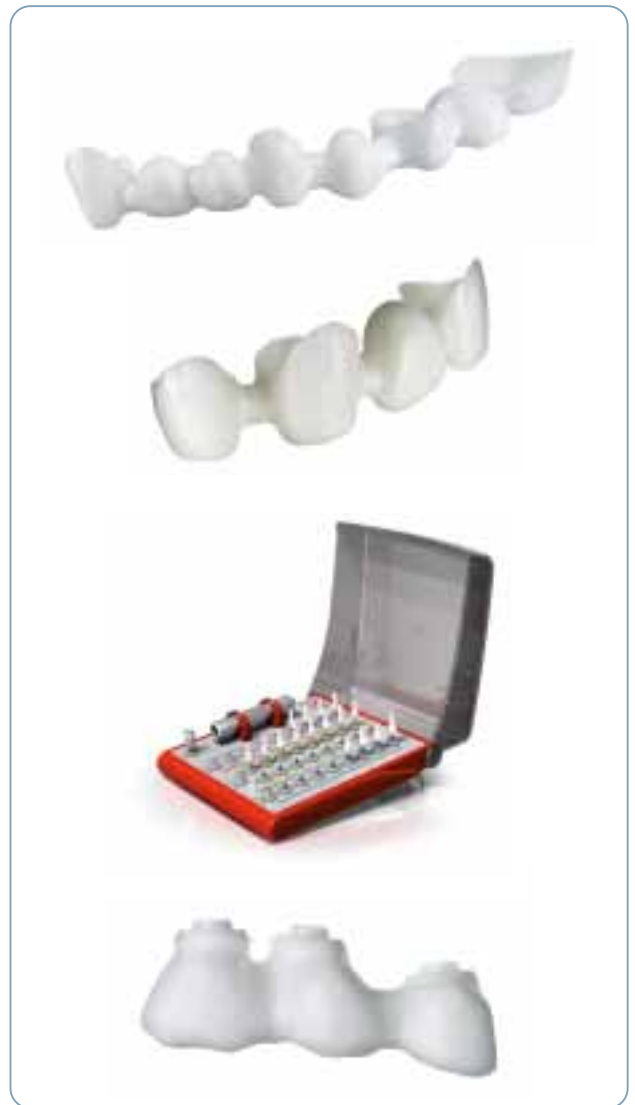
Product News

New Procera® Bridge Zirconia: bridge design within \varnothing 25 mm \times L 60 mm. Precision milled with proven strength.

New Procera® Bridge Alumina: two to four unit bridges, especially appropriate as an esthetic solution in the anterior.

New Procera® Esthetic Abutment Selection Kit: the pre-designed Procera® Esthetic Abutment Zirconia are available for the anterior, pre-molar or molar region in either straight or angled designs and high or low emergence profiles.

New Procera® Implant Bridge: now available in zirconia for improved esthetics.



The focus of this manual is the laboratory procedures. For information on the clinical procedures, please see the Procedures & Products Nobel Esthetics™ including Procera®. Additional information on the prosthetic products is found in the NobelEsthetics™ Product Catalog.

Temporary Abutments and Copings

The Nobel Biocare Temporary Abutments and Copings used for the fabrication of provisional restorations are made of titanium or plastic.

Temporary Abutments Non-Engaging and Temporary Copings Multi-unit are used to fabricate splinted multiple-unit screw-retained restorations. Temporary Abutments Engaging are used to fabricate either single screw-retained restorations, or single or splinted cement-retained temporary restorations.

Laboratory Procedure

- Pour and fabricate a master model using appropriate replicas. Articulate the master model to the opposing jaw.
- Using a lab screw or guide pin, place and tighten the appropriate Temporary Abutment or Coping to the replica.
- Check for occlusal clearance for veneering material and mark the length of any posts that need to be reduced. When fabricating a splinted cement-retained temporary restoration some reduction in axial wall alignment may be required for bridge draw.
- Remove abutments or copings from model and attach suitable protection analogs. Make adjustments using disks and/or burs.
- If you are producing a cement-retained restoration, you have to block out any undercut grooves with suitable block-out material.
- If a metal framework is required to strengthen a temporary cement-retained bridge, a conventional crown and bridge technique can be processed on which temporary material is applied.
- Process the temporary restoration using conventional laboratory technique.



Temporary Abutments and Copings



Protection
Analog – Implant
Level and Multi-unit

Handle for
Protection Analog



Immediate Provisional Implant

The Immediate Provisional Implant is placed between the permanent implants at the time of surgery. The provisional restoration is then cemented directly on these one-piece implants.

An implant level impression is made by “picking up” an Immediate Provisional Implant Coping.

- Snap an Immediate Provisional Implant Analog into each coping and pour the impression in hard stone.
- Transfer the copings from the impression to the analogs on the model.
- Mount the case in an articulator.
- Create a full contour wax-up or use denture teeth in the area that needs to be restored. The dentist will sometimes use the existing denture as a temporary prosthesis. This method is similar to a reline, but the flanges will have to be removed from the denture since the denture is to be cemented to the implants.
- Make a matrix and process the provisional bridge in acrylic.

For more detailed information on Immediate Provisional Implants, see the Immediate Provisional Implant Clinical Procedure & Product Catalog.



Immediate Provisional Implant Analog



Immediate Provisional Implant Coping



Attaching analogs to impression



Final restoration

The objective of Nobel Biocare Procera® Personalized Esthetics is to provide customized prosthetic components for case selections demanding high esthetics and excellent fit.

Procera® Personalized Esthetics include:

- **Procera® Crown:** alumina or zirconia coping, customized but still industrially produced, ensuring predictable results.
- **Procera® Laminate:** alumina, the core is only 0.25 mm thick, yet able to mask discolored teeth.
- **Procera® Bridge Zirconia:** designed to fit into a cylinder of \varnothing 25 mm x length 60 mm precision milled, with proven strength.
- **Procera® Bridge Alumina:** two to four unit bridges, especially appropriate as an esthetic solution in the anterior.

It is essential to accurately document the color of the adjacent teeth according to the Vita shade guide, as this will provide the optimum match for the veneering porcelain that is best-suited to Procera® restorations.

Thereafter, the NobelRondo™ procedure is an ideal alternative that offers unlimited possibilities for achieving customized esthetics, e.g. in terms of the hue, chroma and value of the teeth.

6 steps of shade selection with NobelRondo™:

1. Selection of the NobelRondo™ shade group
2. Selection of the basic hue
3. Variations of color intensity
4. Inner structures of the tooth
5. Variations of lightness (value) and contrasts
6. Texture and shine of the tooth surface.

For more information see NobelRondo™ Manual.



Procera® Crown

Zirconia, Alumina

Indications

- Any position of the mouth – including the posterior.
- Procera® Crown Alumina (0.4 mm) is indicated for use in the esthetic region, premolar to premolar.
- Natural teeth and implant restorations.

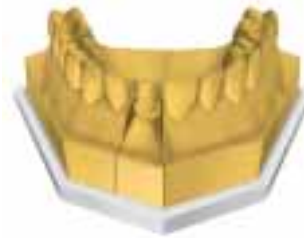
For situations where you need to build up the coping for extra porcelain support, you should use the Procera® Crown CAD or Wax-up techniques. When using the wax-up technique to create your Procera® Crown, build up a wax outer layer with:

- Minimum thickness of 0.6 mm.
- Maximum dimensions of 8 mm x 15 mm.



1. Model

- A standard C&B impression is received.
- Pour the model in hard die stone or epoxy.

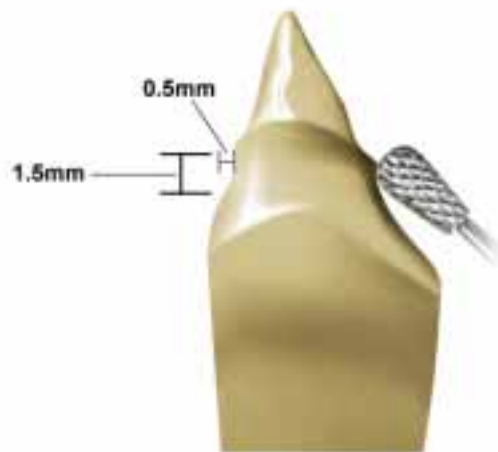


2. Create the Die

- Pin and die the model using standard laboratory techniques.
- Ensure the model height is sufficient (approximately 10 mm below the margin) so that scannable dies can be produced.
- Create an undercut no deeper than 0.5 mm under the margin. The length of the undercut should be a minimum of 1.5 mm to allow the scanner stylus tip to travel easily on the die.
- Make sure that no undercuts are present above the finish line.

Note: If you see undesirable elements (divots, cavities, sharp edges, etc.), block them out with wax to avoid damaging the stylus.

- Use die hardener, but not die spacer, since the Procera® process already compensates for the cement space.



3. Scan the die

- Open the Procera® Software and follow the instructions in the tutorial for:
 - Creating an open order.
- Scan the die using the Procera® Scanner according to the tutorial found within the software.
- Follow instructions in the tutorial for:
 - Using the Procera® Software CAD Design Application.
 - Dispatching an order.



4. Concluding Procedure

After delivery of the Procera® Crown from the Nobel Biocare production facility:

- If necessary, make minor adjustments with diamond impregnated finishing tools with fine grit size under low pressure and using copious water irrigation.
- If necessary, sandblast using two to four bars of pressure utilizing aluminum oxide at an approximate distance of 10 mm:
 - 110 μm – 250 μm for zirconia crowns.
 - 50 μm – 110 μm for alumina crowns.
- Apply appropriate NobelRondo™ dental ceramic (see the NobelRondo™ Ceramic Concept and Procedures CD or manual).
- Clean in an ultrasonic bath before sending the finished product to the clinic.



Procera® Laminate

Alumina

Indications

- Any position of the mouth where the preparation requirements can be respected.



1. Model

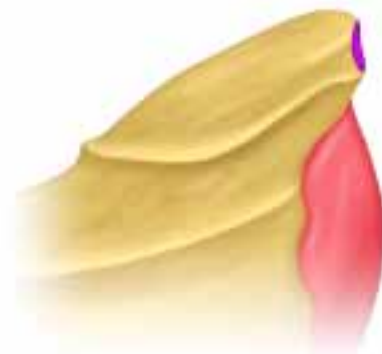
- A standard C&B impression is received.
- Pour the model in hard die stone or epoxy.

2. Create the Die

- Pin and die the model using standard laboratory techniques.
- Ensure the model height is sufficient (approximately 10 mm below the margin) so that scannable dies can be produced.
- Create an undercut no deeper than 0.5 mm under the margin. The length of the undercut should be a minimum of 1.5 mm to allow the scanner stylus tip to travel more easily on the die.
- Make sure that no undercuts are present above the finish line.
- Wax should be used to build up the die on the lingual side to allow the scanner probe tip to travel easier on the die.

Note: *If you see undesirable elements (divots, cavities, sharp edges, etc.), block them out with wax to avoid damaging the stylus.*

- Use die hardener, but not die spacer, since the Procera® process already compensates for the cement space.



3. Scan the die

- Open the Procera® Software and follow the instructions in the tutorial for:
 - Creating an open order.
- Scan the die using the Procera® Scanner according to the tutorial found within the software.
- Follow instructions in the tutorial for:
 - Using the Procera® Software CAD Design Application.
 - Dispatching an order.



4. Concluding Procedure

After delivery of the Procera® Laminate from the Nobel Biocare production facility:

- Apply NobelRondo™ Alumina dental ceramic (see the NobelRondo™ Ceramic Concept and Procedures CD or manual).
- The optimal surface for bonding is the originally delivered surface from Procera® production.
If contaminated or modified, the surface can be re-conditioned by sandblasting for maximum 15 seconds at two to four bars of pressure with 110 micron grit alumina sand at an approximate distance of 10 mm.
- Clean in an ultrasonic bath before sending the finished product to the clinic.



Procera® Bridge

Zirconia, Alumina

Indications

Procera® Bridge Zirconia

- Indicated for all positions in the mouth.
- A bridge designed to fit into a cylinder of \varnothing 25 mm x L 60 mm.
- Requires a minimum of 3 x 2 mm connector between units. (Height x Width) and a minimum cross-sectional area of 6.0 mm².
- Natural teeth and implant restorations.

Procera® Bridge Alumina

- Indicated for use in the esthetic region, premolar to premolar.
- Two-to-four unit bridges.
- Requires a minimum of 3 x 2 mm connector between units. (Height x Width) and a minimum cross-sectional area of 6.0 mm².

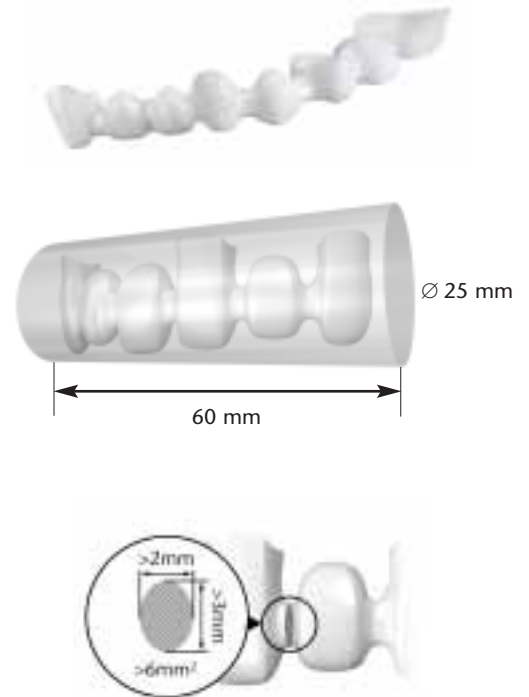
Contraindications

Procera® Bridge Zirconia

- Cases where the anterior/posterior cantilevers have a length of more than one unit.
- Cases with more than two pontics between supporting teeth/abutments.
- Bruxism.

Procera® Bridge Alumina

- No cantilevers and maximum one pontic between supporting teeth/abutments.
- Bruxism.



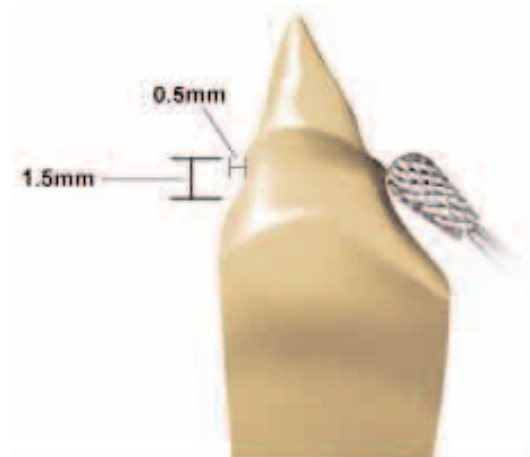
1. Model

- A standard impression is received.
- Pour the model in hard die stone or epoxy.

2. Create the Die

- Pin and die the model using standard laboratory techniques.
- Ensure the model height is sufficient (approximately 10 mm below the margin) so that scannable dies can be produced.
- Create an undercut no deeper than 0.5 mm under the margin. The length of the undercut should be a minimum of 1.5 mm to allow the scanner stylus tip to travel easily on the die.

Continued next page.



2. Create the Die – cont.

- Make sure that no undercuts are present above the finish line.

Note: *If you see undesirable elements (divots, cavities, sharp edges, etc.), block them out with wax to avoid damaging the stylus.*

- Use die hardener, but not die spacer, since the Procera® process already compensates for the cement space.
- If you decide to use a bite index, make this of a hard material, e.g. light-cured resin.

3. Scan the Dies

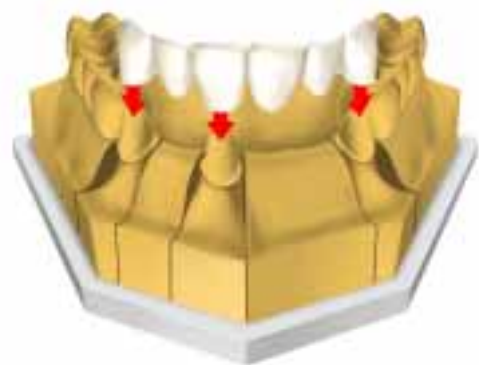
- Open the Procera® Software and follow the instructions in the tutorial for:
 - Creating an open order.
- Scan the die using the Procera® Forte Scanner according to the tutorial found within the software.
- Follow instructions in the tutorial for:
 - Using the Procera® Software CAD Design Application.
 - Dispatching an order.



4. Concluding Procedure

After delivery of the Procera® Bridge from the Nobel Biocare production facility:

- If necessary, make minor adjustments with diamond impregnated finishing tools with fine grit size under low pressure and using copious water irrigation.
- Sandblast using two to four bars of pressure utilizing aluminum oxide at an approximate distance of 10 mm:
 - 110 – 250 µm for zirconia bridges
 - 50 – 110 µm for alumina bridges.
- Apply appropriate NobelRondo™ dental ceramic (see the NobelRondo™ Ceramic Concept and Procedures CD or manual).



Permanent Implant Restorations

With simple and predictable clinical procedures as outlined in the following pages, excellent esthetic results and improved long-term performance can be achieved.

The Procera® Systems provides completely individualized prosthetics with unbeatably precise fit for abutments and bridges. By combining the Procera® manufacturing technique with Alumina and Zirconia ceramics, an unrivalled combination of biocompatibility, beauty and strength is guaranteed. Both Alumina and Zirconia refract and transmit light in much the same way as a natural tooth, thereby giving the restoration a natural looking appearance. In fact, the end result is often an improvement on nature.

Our vast range of pre-produced prosthetics offers easy and beautiful esthetics for all indications whether it is single tooth, several teeth or overdenture solutions, cement-retained or screw-retained.



Cement-Retained



| | | Single | Multiple | Overdenture | |
|----------------------------|--|--------|----------|-------------|---------|
| Procera® Esthetic Abutment | | ✓ | ✓ | | Page 16 |
| Procera® Abutment | | ✓ | ✓ | | Page 17 |
| Snappy Abutment™ | | ✓ | ✓ | | Page 20 |
| Esthetic Abutment | | ✓ | ✓ | | Page 22 |
| NobelPerfect® Abutment | | ✓ | ✓ | | Page 26 |
| Single Tooth Abutment | | ✓ | | | Page 33 |
| Easy Abutment™ | | ✓ | ✓ | | Page 34 |
| GoldAdapt Eng | | ✓ | ✓ | | Page 36 |

permanent implant restorations

Type of Restoration



Screw-Retained



| | | Single | Multiple | Overdenture | |
|-------------------------|--|--------|----------|-------------|---------|
| Multi-unit Abutment | | | ✓ | | Page 24 |
| Procera® Implant Bridge | | | ✓ | | Page 27 |
| GoldAdapt Eng | | ✓ | | | Page 36 |
| GoldAdapt Non-Eng | | | ✓ | | Page 38 |

Overdenture



| | | | | | |
|-------------------------------------|--|--|--|---|---------|
| Gold Abutment Bar | | | | ✓ | Page 42 |
| Multi-unit Abutment Gold Coping Bar | | | | ✓ | Page 24 |
| Ball Abutment | | | | ✓ | Page 44 |

Procera® Esthetic Abutment

Zirconia

Indications

- Single tooth or multiple unit implant restorations.
- Single use only.
- Cement-retained.

Procera® Esthetic Abutments are available for the anterior, pre-molar or molar region in either straight or angled designs and high or low emergence profiles.



1. Model

- A standard C&B impression is received.
- Pour the model in hard die stone or epoxy.
- Pin and die the model using standard laboratory techniques.



Prosthetic Alternatives

Procera® Crown

Procera® Bridge Zirconia

Standard C&B restoration (See below)

2. Restoration

- Fabricate the restoration framework using standard C&B techniques.
- Complete the restoration with ceramic and return to the dentist for final delivery.

Note: If modifying a Procera® Esthetic Abutment, make sure that the thickness of the ceramic material is at least 0.8 mm. This thickness limit is applicable up to a height of 3 mm above implant level.



Procera® Abutment

Zirconia, Titanium

Indications

- Single tooth or multiple unit implant restorations.
- Cement-retained.



External Connection

Internal Connection

1. Model

- An implant level impression is received with an implant replica.
- Confirm the position of the implant level impression coping and implant replica assembly in the impression.
- Pour and fabricate a soft tissue master model.

2a. Regarding Procera® Abutment Wax-up

- Create the abutment in a pattern resin or a hard wax. Use a temporary component (engaging) as a foundation for the abutment pattern.
- You must respect certain dimensions in the waxed framework depending on which Procera® product you wish to fabricate:
 - For ceramic abutments NP – maximum dimensions are 4 mm x 12 mm radius x height (r x h).
 - For ceramic abutments RP/WP – maximum dimensions are 5 mm x 15 mm (r x h).
 - For titanium abutments NP – maximum dimensions are 5 mm x 12 mm (r x h).
 - For titanium abutments RP/WP – maximum dimensions are 7.5 mm x 15 mm (r x h).



2b. Regarding Procera® Abutment CAD

To facilitate correct abutment angulation and measurements, insert a Guide Pin and T-bar into the replica. These are contained in the Procera® Abutment 3D CAD Kit and will help you to feed correct data into the Procera® Software 3D CAD Design application.



3. Scanning

Note that the scanning procedure is only necessary for Procera® Abutment Wax-up.

- Open the Procera® Software and follow the instructions in the tutorial for:
 - Creating an open order.
- Scan the die using the Procera® Scanner according to the tutorial found within the software.
- Follow instructions in the tutorial for:
 - Using the Procera® Software CAD Design Application.
 - Dispatching an order.



4. Concluding Procedure

After delivery of the Procera® Abutment from the Nobel Biocare production facility:

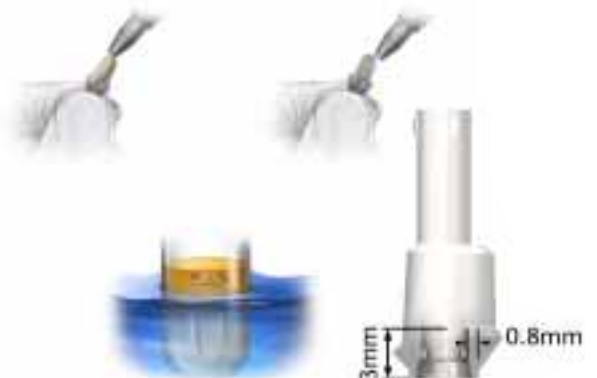
Ceramic Abutments

- If necessary, make minor adjustments with diamond bur or flex disc with fine grit size under low pressure and with copious water irrigation.
- When designing/preparing Procera® Abutment Zirconia, make sure that the thickness of the ceramic material is at least 0.8 mm. This thickness limit is applicable up to a height of 3 mm above implant level.
- Sandblast using two to four bars of pressure utilizing 110 µm – 250 µm aluminum oxide, at an approximate distance of 10 mm.
- Clean in an ultrasonic unit.



Titanium Abutments

- If necessary, make minor adjustments, with a carbide bur. Rubber wheels are used for the collar part.
- Clean in an ultrasonic unit.



Procera® Abutments for other implant systems

Procera® Abutments are available in both zirconia and titanium for;

- Straumann® Regular Neck 4.8 mm implants.
- Camlog® Implant Systems 3.3, 3.8, 4.3, 5.0, 6.0 mm.



Procera® Abutments are available in titanium for;

- Astra Tech® Implant System 3.5ST, 4.0ST, 4.5ST, 5.0ST mm.
- Follow the laboratory procedures for Procera® Abutment and the clinical procedures for each respective implant system.

Snappy Abutment™

Titanium

Indications

- Single tooth or multiple unit implant restorations ideal for posterior restorations.
- Cement-retained.

The NobelDirect® Posterior Implant has an integrated abutment portion, which is identical to the Snappy Abutment™ and thus uses the same prosthetic products.

External Connection

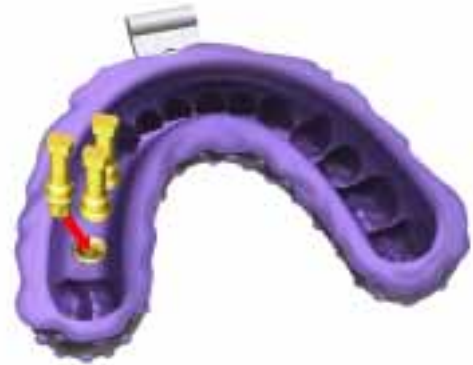


Internal Connection



1. Model

- The impression is received with the embedded Snappy Abutment™ Impression Coping and an Abutment Replica Snappy Abutment™.
- Confirm the placement of the replica in the impression coping, ensuring correct alignment of the three grooves.
- Pour and fabricate a soft tissue master model.



Prosthetic Alternatives

Procera® Crown.

Procera® Bridge.

Plastic/Temporary Coping Snappy Abutment™ (See below).

2. Restoration

- Place the plastic/temporary coping on the abutment.
For single tooth restorations, use the engaging plastic/ temporary coping. For multiple unit restorations, use the non-engaging plastic/ temporary coping.



- Wax the framework around the plastic coping.



- Fabricate the restoration framework using standard C&B techniques.



- Complete the restoration with ceramic and return to the dentist for final delivery.



Esthetic Abutment

Titanium

Indications

- Single tooth or multiple unit implant restoration.
- Cement-retained.

The Esthetic Abutment is designed with a scalloped collar that profiles natural soft tissue contours with various collar heights available depending on the implant platform and system.

The following description is based on straight Esthetic Abutments.

The same procedures are used for the 15° Esthetic Abutments.

External Connection



Straight

15°

Internal Connection

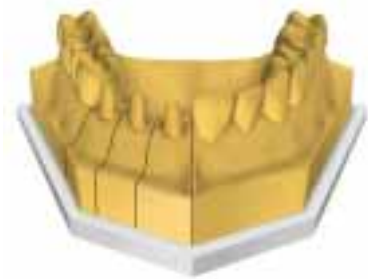


Straight

15°

1. Model

- A standard C&B impression is received.
- Pour the model in hard die stone or epoxy.
- Pin and die the model using standard laboratory techniques.



Prosthetic Alternatives

Procera® Crown

Procera® Bridge

Plastic/Temporary Coping Esthetic Abutment (See below)

2. Restoration

- Place the plastic/temporary coping on the abutment.
- Wax the framework around the plastic/temporary coping.
- Fabricate the restoration framework using standard C&B techniques.
- Complete the restoration with ceramic and return to the dentist for final delivery.



Multi-unit Abutment

Titanium

Indications

- Multiple unit restorations.
- Desire for greater ease of retrievability.
- Screw-retained.

Straight Multi-unit Abutment

The Multi-unit Abutment extends straight up from the implant when no angulations correction is necessary.

Straight Zygoma Multi-unit Abutments are available for Brånemark System® Zygoma Implants.

17° or 30° Multi-unit Abutment

The angled Multi-Unit Abutment is intended for use when the axial alignment of the implant is unfavourable in relation to the desired position of the screw channel.

Available for the NP and RP implants are 17° angled Multi-unit Abutments and additional 30° angled Multi-unit Abutments are available for RP implants. 17° Zygoma Multi-unit Abutments are available for Brånemark System® Zygoma Implants.

Note: Use the same laboratory components for Zygoma Multi-unit Abutments as for ordinary Multi-unit Abutments.

External Connection



Straight 17°/30°

Internal Connection



Straight 17°/30°

1. Model

- An abutment level impression is received with Abutment Replicas Multi-unit.
- Confirm the placement of the abutment replicas in the impression copings.
- Pour and fabricate a soft tissue master model.



Prosthetic Alternatives

Procera® Implant Bridge

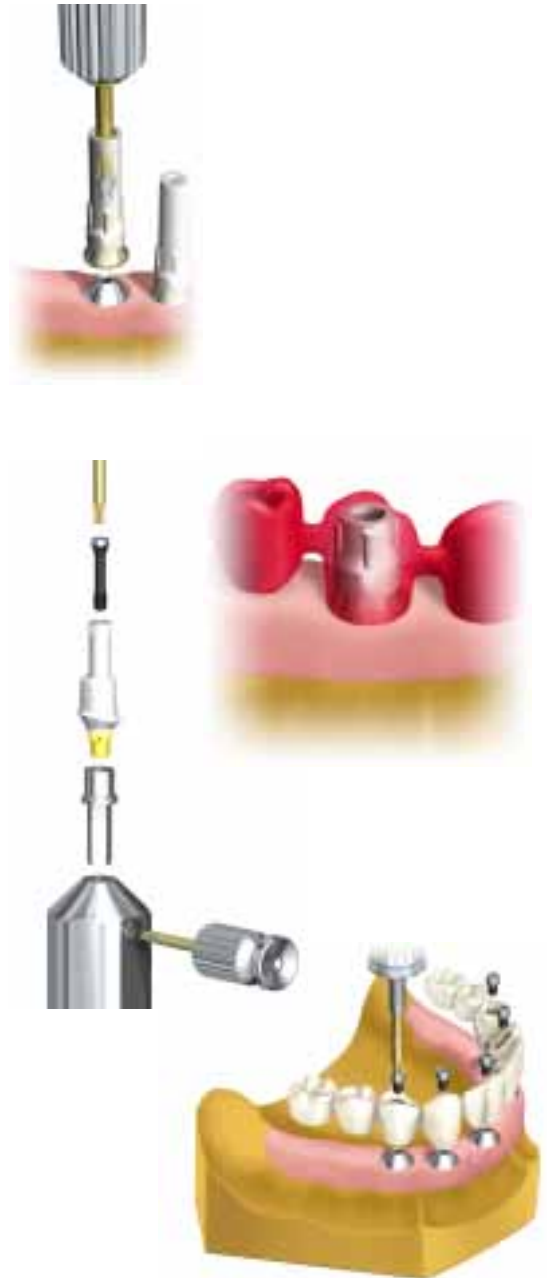
Gold Coping Multi-unit (See below)

2. Restoration

- Attach the gold copings to the abutment replicas using guide pins or lab screws.
- Reduce the height or axial wall of the plastic sleeves as desired. They can be shortened all the way down to the gold copings if needed.
- Wax the framework around the gold copings.

Note: The gold coping is made from a non-oxidizing alloy. Cracking of porcelain may occur if it is applied directly to the gold coping. Make sure the wax covers the gold coping with a minimum wax thickness of 0.5 mm. A reduction to 0.3 mm can be made after casting.

- If needed, remove framework from model, attach protection analogs using lab screws, and carefully wax around base of gold copings for adequate coverage.
- Fabricate the restoration framework using standard C&B techniques.
- Complete the framework with ceramic and return to dentist for final delivery.



Alloy Recommendations Gold Coping:

Melting range: 1400–1490°C/2550–2720°F.

Coefficient of thermal expansion: 12µm/m*°K.

Recommended casting alloys:

Conventional gold alloys: High gold content (min 75% Au + Pt metal) alloys, standard ISO 1562 type 4.

Ceramic bonding alloys: High gold content (min 75% Au) alloys, standard ISO/DIS 9693, NIOM type A.

Soldering in the range of 800 – 890°C/1472 – 1634°F.

Abutment NobelPerfect®

Titanium

Indications

- The Abutment NobelPerfect® is used in esthetically demanding areas from premolar to premolar.
- Single tooth or multiple unit implant restorations.
- Cement-retained.

Internal Connection NobelPerfect®



Straight



10°

1. Model

- An implant level impression is received with an implant replica.
- Confirm the position of the implant level impression coping and implant replica assembly in the impression.
- Pour and fabricate a soft tissue model.
- Attach a straight Abutment NobelPerfect® or a 10° Abutment NobelPerfect® to the implant replica and secure it with a lab screw.



Prosthetic Alternatives

Procera® Crown

Ceramic Coping NobelPerfect® (See below)

Plastic Coping NobelPerfect® (See below)

2a. Restoration with Ceramic Coping NobelPerfect®

- Complete the restoration with NobelRondo™ ceramic and return to the dentist for final delivery.



2b. Restoration with Plastic Coping NobelPerfect®

- Wax the framework around the plastic coping.
- Fabricate the restoration framework using standard C&B techniques.
- Complete the restoration with ceramic and return to the dentist for final delivery.



Procera® Implant Bridge Zirconia

Indications

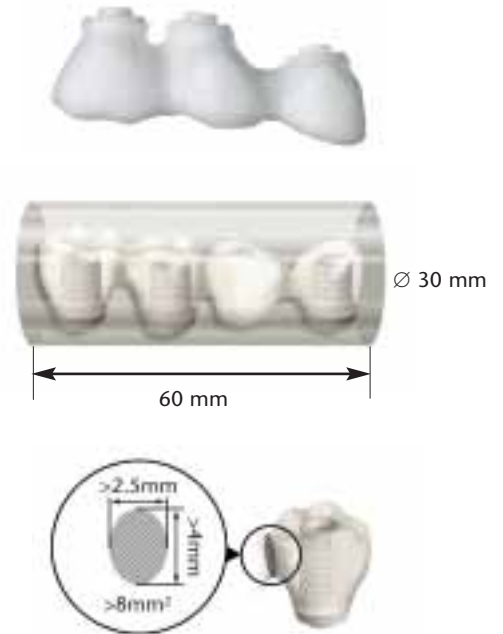
- Implant level only.
- Multiple unit restorations.
- Indicated for all positions in the mouth.
- Screw-retained.
- A bridge designed to fit into a cylinder of \varnothing 30 mm x L 60 mm.
- Requires a minimum of 4 x 2.5 mm connector between units (Height x Width) with a minimum cross-sectional area of 8 mm².

Contraindications

- Cases where the mesial/distal cantilevers have a length of more than one unit.
- Cases with more than two pontics between supporting implants.
- Bruxism.

Platform Options

- NobelReplace™ (NP, RP, WP, 6.0).
- Brånemark System® (NP, RP, WP).
- 3i® 3.75.
- Lifecore® Biomedical Restore 3.75.
- Zimmer® Dental Taper-Lock 4.0.
- Sterngold Implamed® 3.75.



Prosthetic Options

- NobelRondo™ Zirconia dental ceramic.

1. Model

- An implant level impression with implant replicas is received.
- Confirm the position of the implant impression copings and replicas assemblies in the impression.
- Pour and fabricate a master model with soft tissue.
- The soft tissue must be at least 2 mm thick so that the implant replicas will stick up at least 2 mm from the plaster model.



2. Create the Framework and Index

- Make a tooth set-up.
- Make a silicone index of the tooth set-up.
- Make an acrylic framework using non-engaging temporary abutments. Wax should not be used.
- Reduce the acrylic framework to the desired shape.

Design limitations in the Procera® Software

- To ensure that the implant interface is not too thin, a safety-zone in the shape of a cylinder of 0.8 mm material thickness and 3mm in height will override customer design, if necessary.
- The minimum space between two position locators is 2 mm.



3. Scan the Model and Framework

The following instructions mimic the Design Tab flow in the Procera® Software:

- Tighten the Position Locators Model firmly on the steamcleaned master model and attach the model firmly to the bridge holder. Make sure that the implant replicas and locators are free from wax or dust, since the precision will otherwise be compromised. For example, one hair is about 70 μm , +/- 30 μm , thick, and even this small distance can compromise the result.
- Scan the position of the Position Locators on the model.
- In the Procera® Software, define what interfaces should be used for each implant position.
- Mount the acrylic framework into the Procera® Implant Bridge holder.
 - a. Drill holes in the end points of the framework.
 - b. Attach 20 mm guide pins, in the Holder Procera® Implant Bridge. The guide pins need to protrude from the holder enough, so they can be scanned by the stylus.
 - c. Adjust the holder so that the guide pins will fit into the holes in the framework.
 - d. Attach the guide pins to the framework with self-curing acrylic. Make sure that the framework lies as flat as possible. Don't move the framework and pins until the acrylic is hard.



Continued on next page.

3. Scan the Model and Framework – cont.

- Install Position Locators Bridge into the framework and scan their position. Make sure that the framework and the locators are free from wax or dust, since the precision will otherwise be compromised.
- Remove the Position Locators from the framework and fill out the screw holes with wax.
- Scan the underside of the framework.
- Flip the framework holder to expose the topside of the framework.
- Scan the topside of the framework.
- The scans are fused together in the Procera®. Software and the resulting scanned Procera® Implant Bridge is viewed.
- View, approve and send the Procera® Implant Bridge file to the Procera® production facility.



Note: *Narrow spaces and small irregularities that the 2.5 mm stylus can't reach will not be defined in the milled bridge, but have to be adjusted after delivery from the Nobel Biocare production facility.*

4. Concluding Procedure

After delivery of the Procera® Implant Bridge from the Nobel Biocare production facility:

- If necessary, make minor adjustments using diamond impregnated finishing tools with fine grit size, under low pressure and using copious water irrigation.
- Sandblast using two to four bars of pressure utilizing 110 – 250 µm aluminum oxide, at a distance of approximately 10 mm.
- Apply NobelRondo™ Zirconia and Gingiva dental ceramic (see the NobelRondo™ Ceramic Concept and Procedures CD or manual).



Note: *Abutment screws are not included.*

Procera® Implant Bridge Titanium

Indications

- Implant level or abutment level.
- Multiple unit restorations.
- Screw-retained.

Platform Options

- NobelReplace™ (NP, RP, WP, 6.0).
- Brånemark System® (NP, RP, WP).
- Straumann® Dental Implant System Regular Neck 4.8 (implant level).
- Straumann® Dental Implant System Wide Neck 6.5 (implant level).
- 3i® 3.75 (implant level).
- Lifecore® Biomedical Restore 3.75 (implant level).
- Zimmer® Dental Taper-Lock 4.0 (implant level).
- Sterngold Implamed® 3.75 (implant level).
- Ankylos® Implant System 3.5, 4.5, 5.5, 7.0 (abutment level).
- Astra Tech® Implant System 3.5ST, 4.0ST, 4.5ST, 5.0ST (abutment level).
- Camlog® Implant System 3.3, 3.8, 4.3, 5.0, 6.0 (abutment level).



Prosthetic Options

- Wrap-around.
- Traditional acrylic.
- Ti-dental ceramic.

1. Model

- An implant or abutment level impression with replicas is received.
- Confirm that the impression copings and the replicas are put together and positioned correctly in the impression.
- Pour and fabricate a master model with soft tissue.
- The soft tissue must be at least 2 mm thick so that the replicas stick up at least 2 mm from the plaster model.



2. Create the Framework and Index

- Make a tooth set-up.
- Make a silicone index of the tooth set-up.
- Make an acrylic framework using non-engaging temporary abutments/cylinder. Wax should not be used.
- Reduce the acrylic framework to the desired shape.



Design limitations in the Procera® Software

- The minimum space between two Position Locators is 2 mm.

3. Scan the Model and Framework

The following instructions mimics the Design Tab flow in the Procera® Software:

- Tighten the Position Locators Model firmly on the steamcleaned master model and attach the model firmly to the bridge holder. Make sure that the replicas and locators are free from wax or dust, since the precision will otherwise be compromised. For example, one hair is about 70 μm , +/- 30 μm , thick, and even this small distance can compromise the result.
- Scan the position of the Position Locators on the model.
- In the Procera® Software, define what interfaces should be used for each implant/abutment position.
- Mount the acrylic framework into the Holder Procera® Implant Bridge.
 - a. Drill holes in the end points of the framework.
 - b. Attach 20 mm guide pins, in the Holder Procera® Implant Bridge. The guide pins need to protrude from the holder enough, so they can be scanned by the stylus.
 - c. Adjust the holder so that the guide pins will fit into the holes in the framework.
 - d. Attach the guide pins to the framework with self-curing acrylic. Make sure that the framework lies as flat as possible. Don't move the framework and pins until the acrylic is hard.
- Install Position Locators Bridge into the framework and scan their position, make sure that the framework and the locators are free from wax or dust, since the precision will otherwise be compromised.
- Remove the Position Locators from the framework and fill out the screw holes with wax.
- Scan the underside of the framework.
- Flip the framework holder to expose the topside of the framework.
- Scan the topside of the framework.



3. Scan the Model and Framework – cont.

- The scans are fused together in the Procera® Software and the resulting scanned Procera® Implant Bridge is viewed.
- View, approve and send the Procera® Implant Bridge file to the Procera® production facility.

Note: *Narrow spaces and small irregularities that the 2.5 mm stylus can't reach will not be defined in the milled bridge, but have to be adjusted after delivery from the Nobel Biocare production facility. For the Procera® Implant Bridge Titanium, the model and framework may still be sent to the production facility for scanning.*

4. Concluding Procedure

After delivery of the Procera® Implant Bridge from the Nobel Biocare production facility:

- Grind the titanium framework with hard metal burs only in one direction.
- Sandblast using 2.5 bars of pressure utilizing 110 – 250 µm aluminum oxide, at a 45° angle.
- Clean in an ultrasonic unit with distilled water for 5 minutes.
- Let the framework dry in room temperature 10–30 min before applying the bonding material.
- Apply porcelain following the instructions of the porcelain manufacturer.



Note: *Abutment screws/Prosthetic screws are not included.*

Procera® Implant Bridge for other implant systems

Procera® Implant Bridge is available at implant level for Straumann® Regular Neck 4.8 mm and Wide Neck 6.5 mm implants.

Procera® implant Bridge is also available at abutment level for Ankylos® Implant System 3.5, 4.5, 5.5, 7.0 mm, Astra Tech® Implant System 3.5ST, 4.0ST, 4.5ST, 5.0ST mm and Camlog® Implant System 3.3, 3.8, 4.3, 5.0, 6.0 mm, by using Multi-unit Abutments designed for each implant system.

Note: *Follow the normal laboratory procedure for Procera® Implant Bridge, by using Abutment Replicas Multi-Unit in the model.*

*Straumann® is a registered trademark of Straumann Group.
Ankylos® is a trademark of Dentsply Friadent Group.
Astra Tech® is a trademark of AstraZeneca Group.
Camlog® is a trademark of Camlog Biotechnologies Group.*

*3i® is a registered trademark of Biomet Group.
Lifecore® Biomedical Restore is a registered trademark of Lifecore Biomedical Group.
Zimmer® Dental Taper-Lock is a registered trademark of Zimmer Group.
Sterngold Implamed® is a registered trademark of Sterngold Group.*

Single Tooth Abutment

Titanium

Indications

- Single tooth implant restoration with limited interdental space.
- Cement-retained.

Internal Connection



1. Model

- An implant level impression is received with an implant replica.
- Confirm the position of the implant level impression coping and implant replica assembly in the impression.
- Pour and fabricate a soft tissue master model.
- Attach the Single Tooth Abutment to the implant replica and secure it with a lab screw.



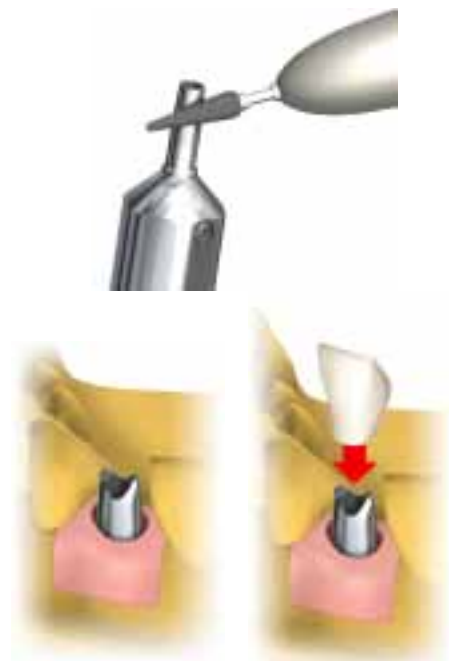
Prosthetic Alternatives

Procera® Crown

Standard C&B restoration (see below)

2. Restoration

- Use an aluminum oxide grinding instrument to modify the Single Tooth Abutment. Use a protection analog to protect the margin of the abutment. A matrix/ template can be fabricated using a pattern resin to aid the restorative dentist in properly placing the modified abutment in the mouth.
- Fabricate the restoration framework using standard C&B techniques.
- Complete the restoration with ceramic and return to the dentist for final delivery.



Easy Abutment™

Titanium

Indications

- Single tooth or multiple unit implant restorations ideal for posterior restorations.
- Cement-retained.

External Connection



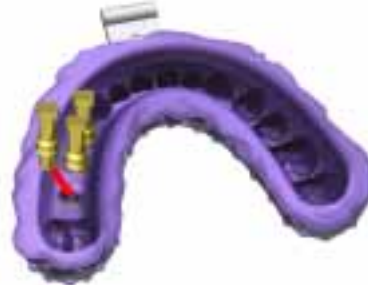
Internal Connection



1a. Model with the Abutment Replica Easy Abutment™

(Applicable if the Easy Abutment™ has not been modified.)

- The impression is received with the embedded Easy Abutment™ Impression Coping and an Abutment Replica Easy Abutment™.
- Confirm the placement of the replica in the impression coping, ensuring correct alignment of the three grooves.
- Pour and fabricate a soft tissue master model.



1b. Model with stone dies

(Applicable if the Easy Abutment™ has been modified.)

- A standard C&B impression is received.
- Pour the model in hard die stone or epoxy.
- Pin and die the model using standard laboratory techniques.

Prosthetic Alternatives

Procera® Crown

Procera® Bridge

Ceramic Coping Easy Abutment™ (see below)

Plastic Coping Easy Abutment™ (see below)

2a. Restoration with Ceramic Coping Easy Abutment™

- Complete the restoration with NobelRondo™ ceramic and return to dentist for final delivery.



Ceramic Coping
Easy Abutment™
Engaging

2b. Restoration with Plastic Coping Easy Abutment™

- Place the plastic coping on the abutment. For single tooth restorations, use the engaging plastic coping. For multiple unit restorations, use the non-engaging plastic coping.



- Wax the framework around the plastic coping or stone die.



- Fabricate the restoration framework using standard C&B techniques.



- Complete the restoration with ceramic and return to the dentist for final delivery.



GoldAdapt Engaging

Gold base/pre-attached waxing sleeve

Indications

- Screw-retained single tooth.
- Cement-retained single tooth and multiple unit restorations.
- Screw access hole location through occlusal surface of posterior teeth or cingulum of anterior teeth without angle correction.
- Limited interocclusal and/or interdental space.

External Connection



Internal Connection



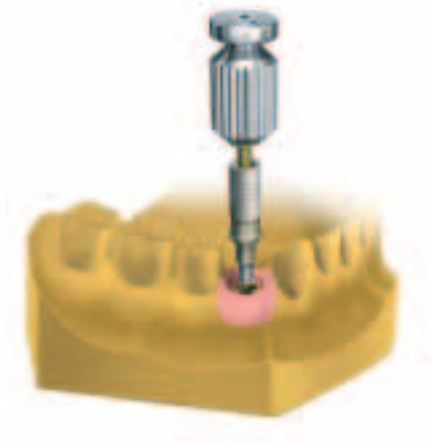
The GoldAdapt Engaging engages the implant's antirotational feature and can be used in two ways:

- Custom abutment for cement-retained restorations, see below.
- Single screw-retained restoration, see page 38.

Cement retained restorations

1. Model

- An implant level impression is received with an implant replica.
- Confirm the position of the implant level impression coping and implant replica assembly in the impression.
- Pour and fabricate a soft tissue master model.
- Attach the GoldAdapt to the implant replica and secure with a lab screw.



Prosthetic Alternatives

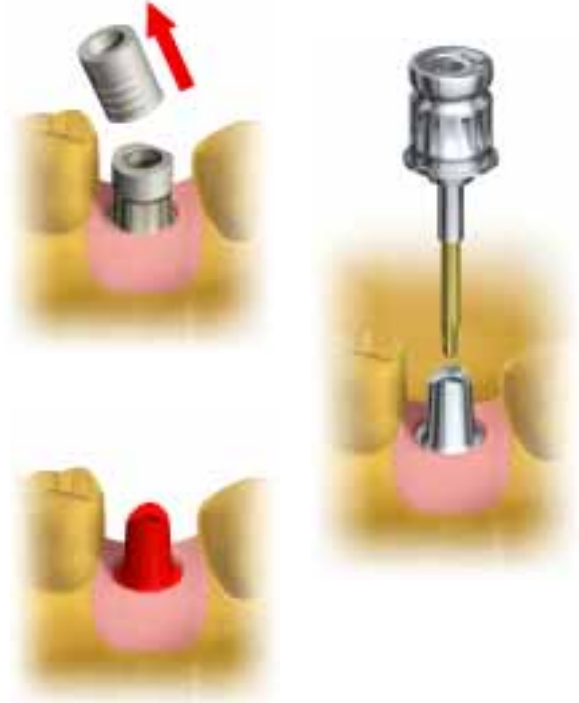
Procera® Crown

Standard C&B restoration

2. Restoration

- Reduce the height of the plastic sleeve as desired. For best result, use a double-sided diamond disk.
- Wax-up the framework around the GoldAdapt so that it ensures optimum esthetics and retention of the restoration. If the restoration will be splinted, check abutments for parallelism.
- Fabricate the final abutment using standard C&B techniques.
- Finalize abutment with finishing stones and rubber wheels, and return to the dentist. See picture for finalized abutment.

Note: *If the abutment will be scanned to fabricate a Procera® Crown, make sure contours and finish line are smooth.*



Alloy Recommendations

GoldAdapt:

Melting range: 1400–1490°C/2550–2720°F.

Coefficient of thermal expansion: 12µm/m*°K.

Recommended casting alloys:

Conventional gold alloys: High gold content (min75% Au +Pt metal) alloys, standard ISO 1562 type 4. Soldering in the range of 800 – 890°C/1472 – 1634°F.

Ceramic bonding alloys: High gold content (min 75% Au) alloys, standard ISO/DIS 9693, NIOM type A. Soldering in the range of 800 – 890°C/1472 – 1634°F.

Single screw-retained restoration

1. Model

- An implant level impression is received with an implant replica.
- Confirm the position of the implant impression coping and implant replica assembly in the impression.
- Pour and fabricate a soft tissue master model.
- Attach the GoldAdapt to the implant replica and secure with a lab screw.



2. Restoration

- Reduce the height of the plastic sleeve as desired. For best result use a double-sided diamond disk.



- Wax the framework around the GoldAdapt.



Note: The gold base is made from a non-oxidizing alloy. Cracking of porcelain may occur if it is applied directly to the gold base. Make sure the wax covers the gold base with a minimum wax thickness of 0.5 mm. A reduction to 0.3 mm can be made after casting.

2. Restoration – cont.

- Fabricate the restoration framework using standard C&B techniques.
- Complete the restoration with ceramic and return to the dentist for final delivery.



Alloy Recommendations

GoldAdapt:

Melting range: 1400–1490°C/2550–2720°F.

Coefficient of thermal expansion: 12µm/m*°K.

Recommended casting alloys:

Conventional gold alloys: High gold content (min 75% Au + Pt metal) alloys, standard ISO 1562 type 4. Soldering in the range of 800 – 890°C/1472 – 1634°F.

Ceramic bonding alloys: High gold content (min 75% Au) alloys, standard ISO/DIS 9693, NIOM type A. Soldering in the range of 800 – 890°C/1472 – 1634°F.

GoldAdapt Non-Engaging

Gold base/pre-attached waxing sleeve

Indications

- Multiple unit implant restoration.
- Limited interocclusal space.
- Screw access hole location through occlusal surface of posterior teeth or cingulum of anterior teeth without angle correction.
- Implants with less than 40° overall divergence to allow path of insertion.
- Screw-retained.

External Connection

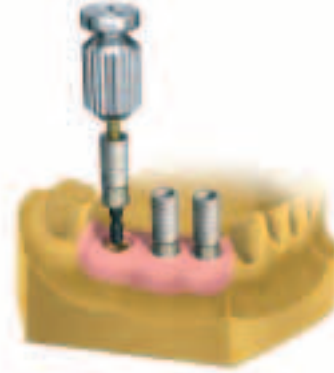


Internal Connection



1. Model

- An implant level impression is received with implant replicas.
- Confirm the position of the impression coping and implant replica assembly in the impression.
- Pour and fabricate a soft tissue master model.
- Attach the GoldAdapt to the implant replica and secure with a lab screw.



2. Restoration

- Reduce the height of the plastic sleeve as desired. For best result use a double-sided diamond disk.
- Wax the framework around the GoldAdapt.

Note: The gold base is made from a non-oxidizing alloy. Cracking of porcelain may occur if it is applied directly to the gold base. Make sure the wax covers the gold base with a minimum wax thickness of 0.5 mm. A reduction to 0.3 mm can be made after casting.



Restoration cont.

- Fabricate the restoration framework using standard C&B techniques.
- Complete the restoration with ceramic and return to the dentist for final delivery.



Alloy Recommendations

GoldAdapt:

Melting range: 1400–1490°C/2550–2720°F.

Coefficient of thermal expansion: 12µm/m*°K.

Recommended casting alloys:

Conventional gold alloys: High gold content (min75% Au +Pt metal) alloys, standard ISO 1562 type 4.

Soldering in the range of 800 – 890°C/1472 – 1634°F.

Ceramic bonding alloys: High gold content (min 75% Au) alloys, standard ISO/DIS 9693, NIOM type A.

Soldering in the range of 800 – 890°C/1472 – 1634°F.

Gold Abutment Bar/Gold Coping Bar

Indications

- Fully edentulous arch.
- Extensive bone or soft tissue loss.
- Compromised patient manual dexterity.
- Necessity for soft tissue support.
- Phonetic concerns.

A bar-retained overdenture is a conventional acrylic denture retained by attachments to an implant-supported cast. The denture can be either tissue supported or implant supported.

External Connection



Internal Connection



Gold Abutment Bar
Implant Level



Gold Coping Bar
Multi-unit

1. Model

- An implant level or abutment level impression is received with replicas.
- Confirm the position of the impression coping and replica assembly in the impression.
- Fabricate a master model.
- Attach the gold abutments/copings to the replicas and tighten them using lab screws or guide pins. Make an occlusal rim, incorporate the gold abutments/copings and send to the dentist for a record of the jaw relationship.



2. Restoration

- Attach a bar to the abutments/copings with wax or resin material. Tighten replicas to the gold abutments/copings and embed them into soldering investment.
- Solder the bar to the gold abutments/copings.
- Block out the bar and prepare a wax try-in of the tooth set-up. Send to the dentist for try-in.



3. Concluding Procedure

- Block underneath the bar and around the gold abutments/copings. Process the attachments into the overdenture.
- Complete and finish denture using standard denture procedures. Return to the dentist for final delivery.



Gold Abutment Bar/Gold Coping Bar:

Soldering in the range of 800 – 890°C/1472–1634°F.

Ball Abutment Titanium

Indications

- Fully edentulous arch.
- Extensive bone or soft tissue loss.
- Compromised patient manual dexterity.
- Necessity for soft tissue support.
- Phonetic concerns.
- Implant placed too far posterior to connect with a bar.
- Allows for misangulation up to 30° between implants.

A Ball Abutment overdenture is a tissue supported conventional overdenture retained by abutments, which are threaded directly into the implants.

External Connection



Internal Connection



1. Model

- An abutment level impression is received with Abutment Replicas Ball Abutment.
- Confirm the placement of the replicas in the impression.
- Pour the model in hard die stone or epoxy.
- Block the abutment replicas and prepare an occlusal rim. Send to the dentist for a record of the jaw relationship.



2. Restoration

- Prepare a wax try-in of the tooth set-up.



3. Concluding Procedure

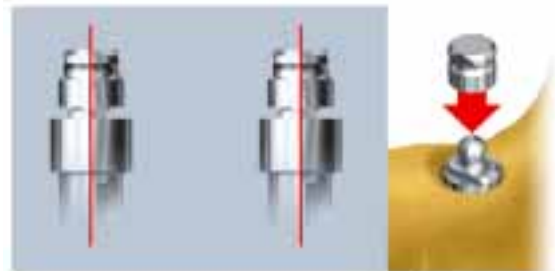
- Place the Gold Caps Ball Abutment onto the replicas, block out inside of gold cap with rubber separator or silicone to prevent acrylic entering during processing. If additional retention is necessary, adjust by turning the lamellae retention insert clockwise (increasing) or counterclockwise (decreasing) using the Screwdriver/Activator.

Note: Do not turn more than one turn.



Screwdriver/Activator for Gold Cap Ball Abutment

- Position the Gold Caps so that they are parallel to each other in a horizontal/vertical plane. Use clear acrylic to prevent tipping of Gold Cap. Block out from the bottom of the cap to the ridge.



- Process the denture using standard techniques.

Note: If the dentist will process a Gold Cap, use the red processing cap and process in the same manner.

- Complete and finish the denture using standard denture procedures. Return to the dentist for final delivery.



Terms you need to know – Glossary

Abutment – A component screwed to the top of the implant that serves as a support and retention for the temporary or final prosthetic restoration.

Abutment level impression – An impression taken on the abutment, using conventional techniques or using an abutment level impression coping. Used to transfer the position of the abutment from the patient's mouth to a master model.

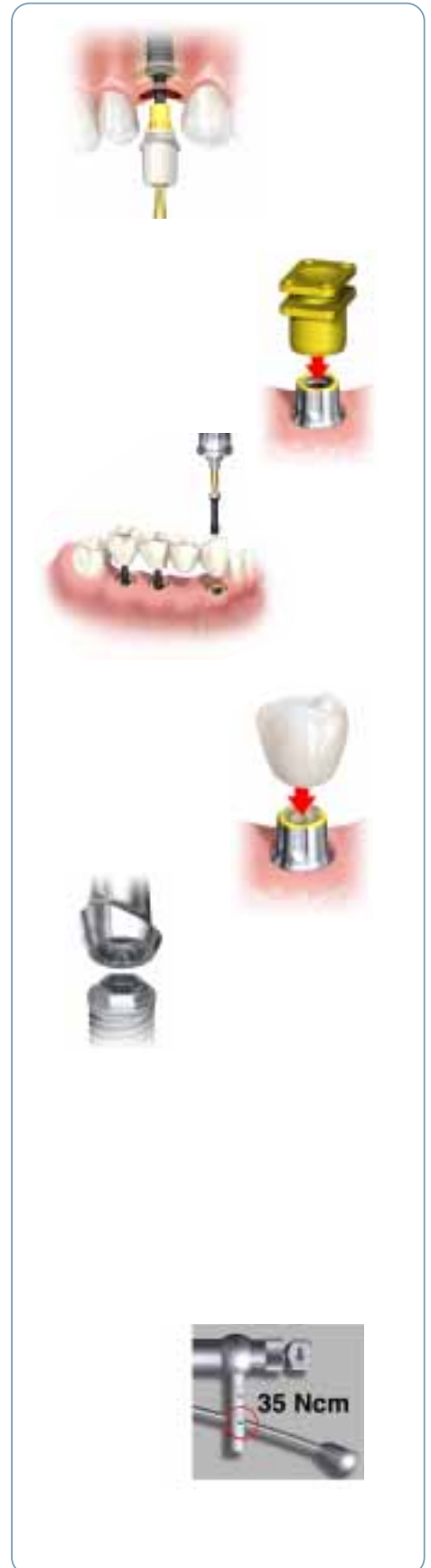
Abutment Screw – A screw that secures the abutment to the implant and torqued to a final position. In laboratories a Lab screw is used to avoid damaging of the abutment screw.

Cement retained restorations – A restoration cemented over the abutment.

External connection – External hexagonal implant/abutment interface

Immediate loading – Immediate occlusal loading.

Immediate Function™ – Temporary or permanent prosthetic solution delivered immediately at surgery. The procedure is clinically documented.



Implant level impression – An impression taken on the implant. Used to transfer the position of the implant from the patient’s mouth to a master model.

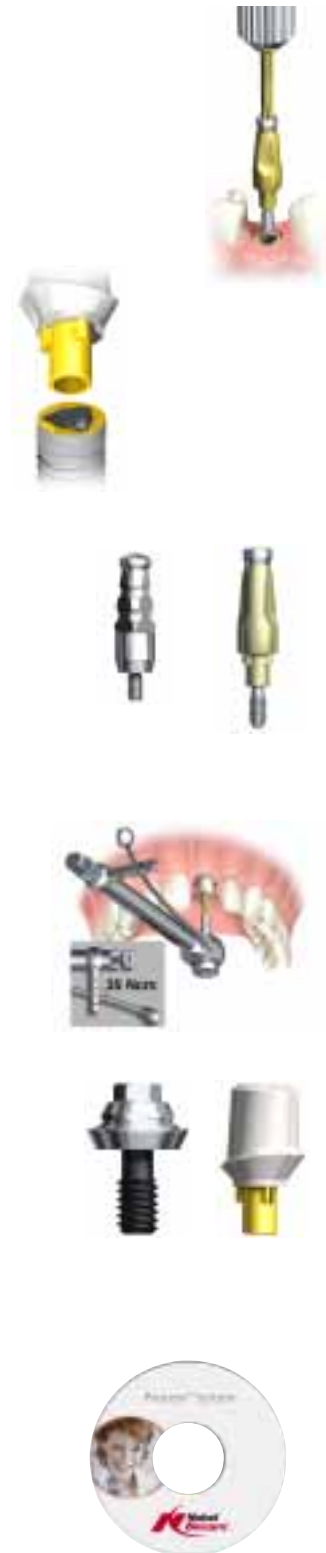
Internal connection – Internal tri-channel implant/abutment interface.

Impression Coping – A device used to register the position of the implant or abutment when taking an impression. It stays in the impression or must be removed from the oral cavity and repositioned in the impression.

Manual Torque Wrench Prosthetic – A torque wrench used to tighten abutments and restorations to the desired torque measurement.

Permanent abutments – Abutments designed to remain permanently in the patient’s mouth.

Procera® Software – A software from Nobel Biocare used to order the unique, on-demand and customized Procera® abutments, laminates, crowns and bridges. Used also together with the NobelGuide™ Concept.



Replica (abutment or implant) – A replica of the abutment or implant attached to the impression coping after taking an impression to help make an accurate model.

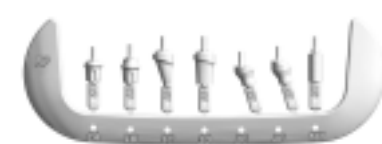
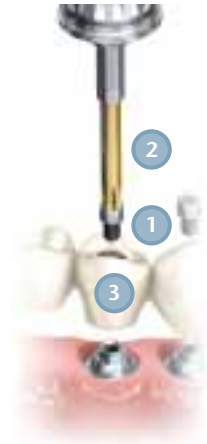
Prosthetic Screw (1) – A screw that secures the restoration to the abutment and torqued to a final position. In laboratories a Lab screw is used to avoid damaging of the abutment screw.

Screwdriver Machine/Manual Unigrip™ (2) – A screwdriver used to retain screws for abutments and restorations.

Screw-retained restorations (3) – A restoration retained by screws through the crown and threads into the abutment.

Temporary Abutments and copings – Abutments and copings used for making temporary restorations. They are removed prior to securing the final restoration.

Try-in Abutments – Used to help select the proper size and shape abutment for the patient. Made of plastic, these abutments can be reused.



Implant/Abutment Interface Diameter

Our products are organized according to a “platform concept”, which facilitates treatment planning.

Narrow Platform (NP) for situations in which there is limited inter-dental space or a narrow crest.

Regular Platform (RP) for cases ranging from single anterior tooth loss to complete edentulism.

Wide Platform (WP) where additional loading can be expected or whenever a wider diameter implant/abutment is considered preferable.

6.0 Platform (6.0) where additional loading can be expected or whenever an even wider diameter implant/abutment is considered preferable.

External Connection

Brånemark System® Mk III Groovy*
 NobelSpeedy™ Groovy**
 Brånemark System® Mk III*
 Brånemark System® Mk IV
 Brånemark System® Zygoma TiUnite®
 Brånemark System® Zygoma

Internal Connection

NobelReplace™ Tapered Groovy
 NobelReplace™ Straight Groovy
 NobelSpeedy™ Replace
 Replace® Select Tapered
 Replace® Select Straight

Internal Connection

NobelPerfect®
 NobelPerfect® Groovy

One-Piece Implants




NobelDirect® Posterior***

*For RP Ø 3.75 and RP Ø 4 implants, use RP prosthetic components.

** For WP Ø 5 and WP Ø 6 implants, use WP prosthetic components.

***Use prosthetic components for Snappy Abutment™.

External Connection

-  NP Ø 3.5mm interface
-  RP Ø 4.1mm interface
-  WP Ø 5.1mm interface






Internal Connection

-  NP Ø 3.5 mm interface
-  RP Ø 4.3 mm interface
-  WP Ø 5.0 mm interface
-  6.0 Ø 6.0 mm interface






Internal Connection NobelPerfect®

-  NP Ø 4.3 mm interface
-  RP Ø 5.0 mm interface
-  WP Ø 5.75 mm interface

Interface Diameter



NobelDirect® Posterior

-  RP Ø 4.3 mm
-  WP Ø 5.0 mm
-  6.0 Ø 6.0 mm



Abutment Selection

If the final restoration is to meet the esthetic and functional demands of the dentist and patient, selecting the proper abutment is crucial. In some cases, the dentist makes the abutment selection and sends an abutment level impression to the laboratory. However in many cases, the dentist takes an impression at implant level to facilitate the abutment choice.

When selecting abutments, there are a few things to look at, such as:

Platform/System

Different brands have different platform systems. The platform of the abutment must be correspondent to the implant platform. For further information see on page 49.

Tissue/Cuff Height

To determine the right cuff height, measure the soft tissue depth around the implant replica. The cuff height can be chosen either depending on the importance of esthetics or hygiene.

Vertical Space

In addition to the height of the selected abutment, an additional 1.5 to 2 mm of space must be available over the prosthetic components to allow for casting and/or veneering material.

Interdental Space

The available interdental space and desired emergence profile also help determine the choice of abutment and collar height.

Angulation

The angulation of each implant will determine which abutment can be used, straight or angled, or whether a customized abutment is needed.

Type of Restoration

Some of the abutments in the Nobel Biocare Implant System are specifically designed for either single tooth or multiple-unit restorations.



Cement-retained

Cement-retained restorations on implants follow the same basic protocol as tooth-supported crowns and fixed partial denture restorations. While the abutments are screw-retained in to the implants, the restoration is cemented over the abutments. The use of temporary cement is recommended for ease of retrievability.

Note: Do not use temporary cement for Procera® Crowns or Procera® Bridge Zirconia and Alumina.

Screw-retained

A screw-retained restoration is retained by screws that enter through the occlusal or cingulum area of the restoration. The screw passes through the crown and threads into the abutment. The restoration is retrievable by the dentist.

Try-in Abutments

In order to facilitate the abutment selection there are now plastic Try-in Abutments available with internal or external connections. These are intended to be placed into an implant (intra-orally) or implant replica (dental laboratory) to aid making the selection of an appropriate shape and size abutment.

The Try-in Abutments are available for **Snappy Abutments™**, straight and angled **Esthetic Abutments** and angled **Multi-unit Abutments**. A soft tissue measuring tool is included along with the **Try-in Abutments**.

The Try-in Abutments are reusable and indicated for partially or fully edentulous cases.



Model Techniques

Identifying Type of Impression

Several impression techniques are used in Implant Dentistry; Conventional C&B impression, or a “Closed” or “Open” Tray Impression made at either implant or abutment level.

Familiarizing yourself with these techniques and the components and materials used in fabricating an accurate soft tissue master model is essential. The first step is to identify the technique and impression type sent to the lab. The second step is to determine the required product(s) needed before the impression can be poured.

Implant Level Impression

Transfers the position of the implant from the patient’s mouth to a master model so that an appropriate abutment can be selected for the case.

Abutment Level Impression

An abutment is pre-selected by the dentist, placed and torqued onto the implant. An appropriate abutment level impression coping is used to transfer the position of the abutment from the patient’s mouth to a model. The restoration is fabricated to fit on top of the abutment.

Conventional C&B Impression

This technique is used when a one-piece implant is placed or an abutment for a cement-retained crown or bridge is chosen and modified by the dentist.

The abutment is torqued on the implant and prepared like a natural tooth. An impression is taken of the abutment(s) capturing the abutment margin (retraction cord may be used). The impression is treated as a standard C&B impression, i.e. poured with die stone, pin and die model is fabricated, etc.



Impression Coping Implant Level Closed Tray, NobelReplace™



Impression Coping Closed Tray Multi-unit



NobelDirect® Groovy One-Piece Implant

Closed Tray Technique

Also known as the “transfer” or “reseat” method this technique is best used when there are a limited number of implants that are fairly parallel.

- The laboratory receives both the impression and the impression coping.
- Tighten a corresponding implant or abutment replica onto the impression coping and re-position this assembly back into the impression.
- Pour the impression with soft tissue material and hard die stone.

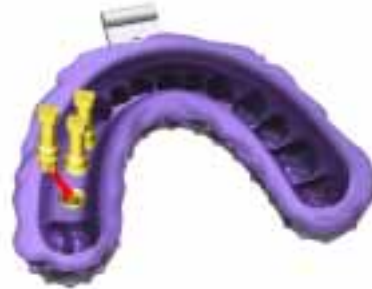


| Product List | External Connection | Internal Connection | Internal Connection NobelPerfect® |
|---|---------------------|---------------------|-----------------------------------|
| Impression Coping Implant Level Closed Tray | | | |
| Impression Coping Implant Level Closed Tray Low Profile | | | |
| Impression Coping Implant Level Closed Tray Plastic | | | |
| Impression Coping Bar Implant Level | | | |
| Implant Replica | | | |

| Product List | External & Internal Connection |
|--|--------------------------------|
| Impression Coping Closed Tray Multi-unit | |
| Impression Coping Bar Closed Tray Multi-unit | |
| Abutment Replica Multi-unit | |

Snappy Abutment™ Impression

The Impression Coping Snappy Abutment™ is embedded in the impression. The impression may be recording a Snappy Abutment™ tightened to an implant or a NobelDirect® Posterior Implant. The impression coping has an integrated plastic finger that fits into the abutment replica. The Abutment Replica Snappy Abutment™ is needed and the impression is poured out using soft tissue material and hard die stone.



Impression with Impression Copings Snappy Abutment™ and Abutment Replicas.



Impression Coping Snappy Abutment™

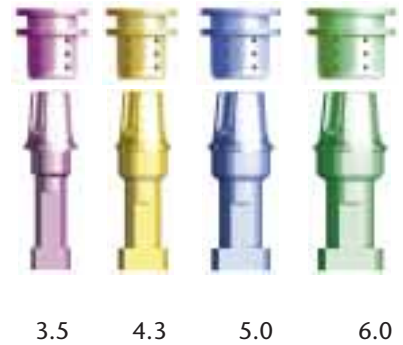
Easy Abutment™ Impression

The Impression Coping Easy Abutment™ is embedded in the impression. The Abutment Replica Easy Abutment™ is required.

Note: *If the dentist has modified the Easy Abutment™, a standard C&B impression is taken and poured out with die stone.*

Impression Copings

Abutment Replicas



3.5

4.3

5.0

6.0

Ball Abutment Impression

A direct impression of the Ball Abutment Titanium is received. An Abutment Replica Ball Abutment is required.



Ball Abutment Impression



Abutment Replica Ball Abutment

Open Tray Technique

Also known as the “pick-up” method this technique is suitable for cases with many implants where the lack of parallelism would make tray removal difficult using the closed tray technique. A limitation may be where there is limited vertical space.

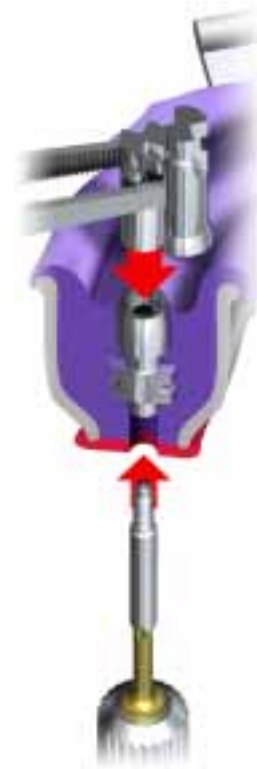
- The laboratory receives the impression with the impression coping inside.







Note: Do not remove the impression coping from the impression.

- Tighten a corresponding implant replica or abutment replica to the coping using the guide pin.

Note: Keep a firm grip on the replica while tightening the guide pin so that no forces are transferred to the impression coping and dislocating it from its reference point. Do not over tighten the guide pin.

- Pour the impression with soft tissue material and hard die stone.



| Product List | External Connection | Internal Connection |
|---|---|---|
| Impression Coping Implant Level Open Tray |  |  |
| Implant Replica |  |  |
| Impression Coping Open Tray Multi-unit |  | |
| Abutment Replica Multi-unit |  | |

Soft Tissue Application

Soft tissue material is used to simulate the clinical soft tissue contours.

The material is a self-hardening silicone and is applied around each coping/replica assembly before the impression is poured with stone.

The flexible material facilitates placement of various abutments onto a sub-gingivally placed replica. It also makes it easier to build out the emergence profile of the restoration without damaging the tissue contour.

The soft tissue material can also be removed from the stone model to confirm that the abutments are fully seated on the replicas.

Note: *With full arch C&B cases the soft tissue can be applied along the entire ridge. For tissue supported overdentures soft tissue material should only be applied around the implant/abutment replicas.*



Model with soft tissue material round implant replicas



Prosthetic Instruments & Screwdriver Selection Guide

Prosthetic Instruments

Handle for Machine Instruments

Screwdriver/Activator for Gold Cap Ball Abutment

Manual Torque Wrench Adapter Prosthetic

Handle for Protection Analog



Screwdriver Selection Guide

| | |
|---|--|
| Abutments | |
|  Angled Multi-unit |  Temporary Abutment |
|  Snappy Abutment™ |  Easy Abutment™ |
|  Procera® Abutment Titanium, Zirconia |  Straight and Angled Esthetic Abutment Titanium |
|  Abutment NobelPerfect® Straight, Angled Titanium |  Procera® Abutment NobelPerfect® Titanium |
|  Procera® Esthetic Abutment |  GoldAdapt™ |
| |  Gold Abutment Bar |
| Guide Pins | |
|  Multi-unit |  Implant Level |
| Prosthetic Screws | Lab Screws |
|  Multi-unit |  Multi-unit |
| |  Multi-unit Angled |
| |  Implant Level |
| Multi-unit NP/RP Multi-unit NP/RP/WP | |
| Brånemark System® NobelReplace™ | |

Unigrip™ Screwdrivers

Manual 20 mm

Manual 28 mm

Manual 36 mm

Machine 20 mm

Machine 25 mm

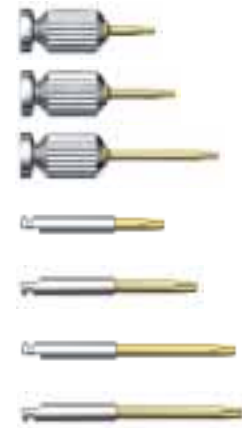
Machine 30 mm

Machine 35 mm

Recommended for lab use:

Manual 36 mm

Machine 35 mm



Multi-unit Abutment Screwdrivers (internal hexagon)

Manual 25 mm

Machine 21 mm



Alphabetical order

| Description | Article | Page |
|---|---------|------|
| A | | |
| Adapter | | |
| Adapter NobRpl WP to RP | 31945 | 44 |
| Abutments | | |
| Ball Abutment Titanium | | |
| Ball Abutment Titanium Brånemark System® RP 1 mm | 31905 | 44 |
| Ball Abutment Titanium Brånemark System® RP 3 mm | 31906 | 44 |
| Ball Abutment Titanium Brånemark System® RP 5 mm | 31907 | 44 |
| Ball Abutment Titanium NobRpl NP 1mm | 31908 | 44 |
| Ball Abutment Titanium NobRpl NP 2mm | 31909 | 44 |
| Ball Abutment Titanium NobRpl NP 3mm | 31910 | 44 |
| Ball Abutment Titanium NobRpl RP 1mm | 31911 | 44 |
| Ball Abutment Titanium NobRpl RP 2mm | 31912 | 44 |
| Ball Abutment Titanium NobRpl RP 3mm | 31913 | 44 |
| Easy Abutment™ | | |
| Easy Abutment™ NobRpl NP 0.75 mm | 29468 | 34 |
| Easy Abutment™ NobRpl NP 1.5 mm | 29469 | 34 |
| Easy Abutment™ NobRpl RP 0.5 mm | 29470 | 34 |
| Easy Abutment™ NobRpl RP 1.5 mm | 29471 | 34 |
| Easy Abutment™ NobRpl WP 0.5 mm | 29472 | 34 |
| Easy Abutment™ NobRpl WP 1.5 mm | 29473 | 34 |
| Easy Abutment™ NobRpl 6.0 mm | 29988 | 34 |
| Easy Abutment™ Brånemark System® NP 1 mm | 30672 | 34 |
| Easy Abutment™ Brånemark System® NP 2 mm | 30673 | 34 |
| Easy Abutment™ Brånemark System® RP 1 mm | 30674 | 34 |
| Easy Abutment™ Brånemark System® RP 2 mm | 30705 | 34 |
| Easy Abutment™ Brånemark System® WP 1 mm | 30706 | 34 |
| Easy Abutment™ Brånemark System® WP 2 mm | 30707 | 34 |
| Esthetic Abutment | | |
| Esthetic Abutment NobRpl NP 1mm | 32372 | 22 |
| Esthetic Abutment NobRpl NP 3mm | 32376 | 22 |
| Esthetic Abutment NobRpl RP 1mm | 32373 | 22 |
| Esthetic Abutment NobRpl RP 3mm | 32377 | 22 |
| Esthetic Abutment NobRpl WP 0.5mm | 32374 | 22 |
| Esthetic Abutment NobRpl WP 3mm | 32378 | 22 |
| Esthetic Abutment NobRpl 6.0 0.5mm | 32375 | 22 |
| Esthetic Abutment Bmk Syst NP 2mm | 32396 | 22 |
| Esthetic Abutment Bmk Syst RP 1mm | 32397 | 22 |
| Esthetic Abutment Bmk Syst RP 3mm | 32399 | 22 |
| Esthetic Abutment Bmk Syst WP 1mm | 32398 | 22 |
| 15° Esthetic Abutment NobRpl NP 1mm | 32380 | 22 |
| 15° Esthetic Abutment NobRpl NP 3mm | 32384 | 22 |
| 15° Esthetic Abutment NobRpl RP 1mm | 32381 | 22 |
| 15° Esthetic Abutment NobRpl RP 3mm | 32385 | 22 |
| 15° Esthetic Abutment NobRpl WP 0.5mm | 32382 | 22 |
| 15° Esthetic Abutment NobRpl WP 3mm | 32386 | 22 |
| 15° Esthetic Abutment NobRpl 6.0 0.5mm | 32383 | 22 |
| 15° Esthetic Abutment Bmk Syst NP 2mm | 32400 | 22 |
| 15° Esthetic Abutment Bmk Syst RP 1mm | 32401 | 22 |
| 15° Esthetic Abutment Bmk Syst RP 3mm | 32403 | 22 |
| 15° Esthetic Abutment Bmk Syst WP 1mm | 32402 | 22 |
| GoldAdapt Abutment | | |
| GoldAdapt Engaging Brånemark System® NP | 29004 | 36 |
| GoldAdapt Engaging Brånemark System® RP | 29008 | 36 |
| GoldAdapt Engaging Brånemark System® WP | 29012 | 36 |
| GoldAdapt Non-Engaging Brånemark System® NP | 29005 | 40 |
| GoldAdapt Non-Engaging Brånemark System® RP | 29009 | 40 |
| GoldAdapt Non-Engaging Brånemark System® WP | 29013 | 40 |
| GoldAdapt Engaging NobRpl NP | 29006 | 36 |
| GoldAdapt Engaging NobRpl RP | 29010 | 36 |
| GoldAdapt Engaging NobRpl WP | 29014 | 36 |
| GoldAdapt Engaging NobRpl 6.0 | 29989 | 36 |
| GoldAdapt Non-Engaging NobRpl NP | 29007 | 40 |
| GoldAdapt Non-Engaging NobRpl RP | 29011 | 40 |
| GoldAdapt Non-Engaging NobRpl WP | 29015 | 40 |
| GoldAdapt Non-Engaging NobRpl 6.0 | 29990 | 40 |
| Gold Abutment Bar | | |
| Gold Abutment Bar Implant Level NobRpl NP | 29061 | 42 |
| Gold Abutment Bar Implant Level NobRpl RP | 29062 | 42 |
| Gold Abutment Bar Implant Level Bmk Syst RP | 29068 | 42 |
| Multi-unit Abutment | | |
| Multi-unit Abutment Brånemark System® NP 1 mm | 29176 | 24 |
| Multi-unit Abutment Brånemark System® NP 2 mm | 29177 | 24 |
| Multi-unit Abutment Brånemark System® NP 3 mm | 29178 | 24 |
| Multi-unit Abutment Brånemark System® RP 1 mm | 29179 | 24 |
| Multi-unit Abutment Brånemark System® RP 2 mm | 29180 | 24 |
| Multi-unit Abutment Brånemark System® RP 3 mm | 29181 | 24 |
| Multi-unit Abutment Brånemark System® RP 4 mm | 29182 | 24 |
| Multi-unit Abutment Brånemark System® RP 5 mm | 29183 | 24 |
| Multi-unit Abutment Brånemark System® WP 1 mm | 29184 | 24 |
| Multi-unit Abutment Brånemark System® WP 2 mm | 29185 | 24 |
| Multi-unit Abutment Brånemark System® WP 3 mm | 29186 | 24 |
| Multi-unit Abutment NobRpl NP 1 mm | 29196 | 24 |
| Multi-unit Abutment NobRpl NP 2 mm | 29197 | 24 |
| Multi-unit Abutment NobRpl NP 3 mm | 29198 | 24 |
| Multi-unit Abutment NobRpl RP 1 mm | 29199 | 24 |
| Multi-unit Abutment NobRpl RP 2 mm | 29200 | 24 |
| Multi-unit Abutment NobRpl RP 3 mm | 29201 | 24 |
| Multi-unit Abutment NobRpl RP 4 mm | 29202 | 24 |
| Multi-unit Abutment NobRpl RP 5 mm | 29203 | 24 |
| Multi-unit Abutment NobRpl WP 1 mm | 29204 | 24 |
| Multi-unit Abutment NobRpl WP 2 mm | 29205 | 24 |
| Multi-unit Abutment NobRpl WP 3 mm | 29206 | 24 |
| Multi-unit Abutment for Astra Tech® 3.5 | 33543 | 32 |
| Multi-unit Abutment for Astra Tech® 4.0 | 33544 | 32 |
| Multi-unit Abutment for Astra Tech® 4.5/5.0 | 33545 | 32 |
| Multi-unit Abutment for Camlog® 3.3 | 33556 | 32 |
| Multi-unit Abutment for Camlog® 3.8 | 33557 | 32 |
| Multi-unit Abutment for Camlog® 4.3 | 33558 | 32 |
| Multi-unit Abutment for Camlog® 5.0/6.0 | 33559 | 32 |
| Multi-unit Abutment for Ankylos® | 33572 | 32 |
| Multi-unit Angled Abutment | | |
| 17° Multi-unit Abutment Brånemark System® NP 2 mm | 29187 | 24 |
| 17° Multi-unit Abutment Brånemark System® NP 3 mm | 29188 | 24 |
| 17° Multi-unit Abutment Brånemark System® RP 2 mm | 29189 | 24 |
| 17° Multi-unit Abutment Brånemark System® RP 3 mm | 29190 | 24 |
| 17° Multi-unit Abutment Brånemark System® RP 4 mm | 29191 | 24 |
| 30° Multi-unit Abutment Brånemark System® NP 2 mm | 29192 | 24 |
| 30° Multi-unit Abutment Brånemark System® NP 5 mm | 29193 | 24 |
| 17° Multi-unit Abutment NobRpl NP 2 mm | 29235 | 24 |
| 17° Multi-unit Abutment NobRpl NP 3 mm | 29236 | 24 |
| 17° Multi-unit Abutment NobRpl RP 2 mm | 29237 | 24 |
| 17° Multi-unit Abutment NobRpl RP 3 mm | 29238 | 24 |
| 17° Multi-unit Abutment NobRpl RP 4 mm | 29239 | 24 |
| 30° Multi-unit Abutment NobRpl RP 4 mm | 29240 | 24 |
| 30° Multi-unit Abutment NobRpl RP 5 mm | 29241 | 24 |
| Procera® Abutment | | |
| Procera® Abutment Ti Brånemark System® NP | | 17 |
| Procera® Abutment Ti Brånemark System® RP | | 17 |
| Procera® Abutment Ti Brånemark System® WP | | 17 |
| Procera® Abutment Ti Brånemark System® NP Wax-up | | 17 |
| Procera® Abutment Ti Brånemark System® RP Wax-up | | 17 |
| Procera® Abutment Ti Brånemark System® WP Wax-up | | 17 |
| Procera® Abutment Ti NobelReplace™ NP | | 17 |
| Procera® Abutment Ti NobelReplace™ RP | | 17 |
| Procera® Abutment Ti NobelReplace™ WP | | 17 |
| Procera® Abutment Ti NobelReplace™ 6.0 | | 17 |
| Procera® Abutment Ti NobelReplace™ NP wax-up | | 17 |
| Procera® Abutment Ti NobelReplace™ RP wax-up | | 17 |
| Procera® Abutment Ti NobelReplace™ WP wax-up | | 17 |
| Procera® Abutment Ti NobelReplace™ 6.0 wax-up | | 17 |
| Procera® Abutment Ti Octagon 4.8 | | 17 |
| Procera® Abutment Titanium for Astra Tech® 3.5ST | | 17 |
| Procera® Abutment Titanium for Astra Tech® 3.5ST Wax-up | | 17 |
| Procera® Abutment Titanium for Astra Tech® 4.0ST | | 17 |
| Procera® Abutment Titanium for Astra Tech® 4.0ST Wax-up | | 17 |
| Procera® Abutment Titanium for Astra Tech® 4.5/5.0ST | | 17 |
| Procera® Abutment Titanium for Astra Tech® 4.5/5.0ST Wax-up | | 17 |
| Procera® Abutment Titanium for Camlog® 3.3 | | 17 |
| Procera® Abutment Titanium for Camlog® 3.3 Wax-up | | 17 |
| Procera® Abutment Titanium for Camlog® 3.8 | | 17 |
| Procera® Abutment Titanium for Camlog® 3.8 Wax-up | | 17 |
| Procera® Abutment Titanium for Camlog® 4.3 | | 17 |
| Procera® Abutment Titanium for Camlog® 4.3 Wax-up | | 17 |
| Procera® Abutment Titanium for Camlog® 5.0/6.0 | | 17 |
| Procera® Abutment Zirconia for Astra Tech® 3.5ST | | 17 |
| Procera® Abutment Zirconia for Astra Tech® 3.5ST Wax-up | | 17 |
| Procera® Abutment Zirconia for Astra Tech® 4.0ST | | 17 |
| Procera® Abutment Zirconia for Astra Tech® 4.0ST Wax-up | | 17 |
| Procera® Abutment Zirconia for Astra Tech® 4.5/5.0ST | | 17 |
| Procera® Abutment Zirconia for Astra Tech® 4.5/5.0ST Wax-up | | 17 |
| Procera® Abutment Zirconia for Camlog® 3.3 | | 17 |
| Procera® Abutment Zirconia for Camlog® 3.3 Wax-up | | 17 |
| Procera® Abutment Zirconia for Camlog® 3.8 | | 17 |
| Procera® Abutment Zirconia for Camlog® 3.8 Wax-up | | 17 |
| Procera® Abutment Zirconia for Camlog® 4.3 | | 17 |
| Procera® Abutment Zirconia for Camlog® 4.3Wax-up | | 17 |
| Procera® Abutment Zirconia for Camlog® 5.0/6.0 | | 17 |
| Procera® Abutment Zirconia for Camlog® 5.0/6.0 Wax-up | | 17 |
| Procera® Abutment Zr Brånemark System® NP | | 17 |
| Procera® Abutment Zr Brånemark System® RP | | 17 |
| Procera® Abutment Zr Brånemark System® WP | | 17 |
| Procera® Abutment Zr Brånemark System® NP Wax-up | | 17 |
| Procera® Abutment Zr Brånemark System® RP Wax-up | | 17 |
| Procera® Abutment Zr Brånemark System® WP Wax-up | | 17 |
| Procera® Abutment Zr NobelReplace™ NP | | 17 |
| Procera® Abutment Zr NobelReplace™ RP | | 17 |
| Procera® Abutment Zr NobelReplace™ WP | | 17 |
| Procera® Abutment Zr NobelReplace™ 6.0 | | 17 |
| Procera® Abutment Zr NobelReplace™ NP wax-up | | 17 |
| Procera® Abutment Zr NobelReplace™ RP wax-up | | 17 |
| Procera® Abutment Zr NobelReplace™ WP wax-up | | 17 |
| Procera® Abutment Zr NobelReplace™ 6.0 wax-up | | 17 |

Procera® Abutment Zr Octagon 4.8 17
 Procera® Abutment Zr Octagon 4.8 Wax-up 17

Procera® Implant Bridge

Procera® Implant Bridge Multi-unit 30
 Procera® Implant Bridge Multi-unit WP 30
 Procera® Implant Bridge Brånemark System® NP 27,30
 Procera® Implant Bridge Brånemark System® RP 27,30
 Procera® Implant Bridge Brånemark System® WP 27,30
 Procera® Implant Bridge NobelReplace™ NP 27,30
 Procera® Implant Bridge NobelReplace™ RP 27,30
 Procera® Implant Bridge NobelReplace™ WP 27,30
 Procera® Implant Bridge NobelReplace™ 6.0 27,30
 Procera® Implant Bridge Octagon 4.8 27,30
 Procera® Implant Bridge Octagon 6.5 27,30

Procera® Crown

Procera® Crown Alumina 8
 Procera® Crown Zirconia 8

Procera® Laminate 10

Procera® Implant Bridge Zirconia 27

Procera® Bridge Alumina 12

Procera® Bridge Zirconia 12

Procera® Esthetic Abutment Selection Kit

Procera® Esthetic Abutment Brånemark System® NP # 1 33754 16
 Procera® Esthetic Abutment Brånemark System® NP # 2 33755 16
 Procera® Esthetic Abutment Brånemark System® NP # 3 33756 16
 Procera® Esthetic Abutment Brånemark System® NP # 4 33757 16
 Procera® Esthetic Abutment Brånemark System® NP # 5 33758 16
 Procera® Esthetic Abutment Brånemark System® NP # 6 33759 16
 Procera® Esthetic Abutment Brånemark System® NP # 7 33760 16
 Procera® Esthetic Abutment Brånemark System® NP # 8 33761 16
 Procera® Esthetic Abutment Brånemark System® NP # 9 33762 16
 Procera® Esthetic Abutment Brånemark System® NP # 10 33763 16
 Procera® Esthetic Abutment Brånemark System® NP # 11 33764 16
 Procera® Esthetic Abutment Brånemark System® NP # 12 33765 16
 Procera® Esthetic Abutment Brånemark System® NP # 13 33766 16
 Procera® Esthetic Abutment Brånemark System® NP # 14 33767 16
 Procera® Esthetic Abutment Brånemark System® NP # 15 33768 16
 Procera® Esthetic Abutment Brånemark System® NP # 16 33769 16
 Procera® Esthetic Abutment Brånemark System® NP # 17 33770 16
 Procera® Esthetic Abutment Brånemark System® NP # 18 33771 16
 Procera® Esthetic Abutment Brånemark System® NP # 19 33772 16
 Procera® Esthetic Abutment Brånemark System® NP # 20 33773 16
 Procera® Esthetic Abutment NobelReplace™ NP # 1 33774 16
 Procera® Esthetic Abutment NobelReplace™ NP # 2 33775 16
 Procera® Esthetic Abutment NobelReplace™ NP # 3 33776 16
 Procera® Esthetic Abutment NobelReplace™ NP # 4 33777 16
 Procera® Esthetic Abutment NobelReplace™ NP # 5 33778 16
 Procera® Esthetic Abutment NobelReplace™ NP # 6 33779 16
 Procera® Esthetic Abutment NobelReplace™ NP # 7 33780 16
 Procera® Esthetic Abutment NobelReplace™ NP # 8 33781 16
 Procera® Esthetic Abutment NobelReplace™ NP # 9 33782 16
 Procera® Esthetic Abutment NobelReplace™ NP # 10 33783 16
 Procera® Esthetic Abutment NobelReplace™ NP # 11 33784 16
 Procera® Esthetic Abutment NobelReplace™ NP # 12 33785 16
 Procera® Esthetic Abutment NobelReplace™ NP # 13 33786 16
 Procera® Esthetic Abutment NobelReplace™ NP # 14 33787 16
 Procera® Esthetic Abutment NobelReplace™ NP # 15 33788 16
 Procera® Esthetic Abutment NobelReplace™ NP # 16 33789 16
 Procera® Esthetic Abutment NobelReplace™ NP # 17 33790 16
 Procera® Esthetic Abutment NobelReplace™ NP # 18 33791 16
 Procera® Esthetic Abutment NobelReplace™ NP # 19 33792 16
 Procera® Esthetic Abutment NobelReplace™ NP # 20 33793 16

Single Tooth Abutment

Single Tooth Abutment NobRpl NP 29476 33

Snappy Abutment™

Snappy Abutment NobRpl NP 0.75mm 32334 20
 Snappy Abutment NobRpl RP 0.5mm 32335 20
 Snappy Abutment NobRpl WP 0.5mm 32336 20
 Snappy Abutment NobRpl 6.0 0.5mm 32337 20
 Snappy Abutment NobRpl NP 1.5mm 32338 20
 Snappy Abutment NobRpl RP 1.5mm 32339 20
 Snappy Abutment NobRpl WP 1.5mm 32340 20
 Snappy Abutment NobRpl 6.0 1.5mm 32341 20
 Snappy Abutment Bmk Syst NP 1mm 32342 20
 Snappy Abutment Bmk Syst RP 1mm 32343 20
 Snappy Abutment Bmk Syst WP 1mm 32344 20
 Snappy Abutment Bmk Syst NP 2mm 32345 20
 Snappy Abutment Bmk Syst RP 2mm 32346 20
 Snappy Abutment Bmk Syst WP 2mm 32347 20

Abutment Screw

Screw Ceramic Abutment Brånemark System® NP 31171 16,17
 Screw Ceramic Abutment Brånemark System® RP 28815 16,17
 Screw Ceramic Abutment NobRpl RP/WP/6.0 28816 16,17
 Screw Ceramic Abutment NobRpl NP 28837 16,17
 Screw Ceramic Abutment Brånemark System® WP 28844 16,17
 Screw Multi-unit Angled Abutment Brånemark System® NP 29194 24

Screw Multi-unit Angled Abutment Brånemark System® RP 29195 24
 Screw Multi-unit Angled Abutment NobRpl NP 29242 24
 Screw Multi-unit Angled Abutment NobRpl RP 29243 24
 Abutment Screw Brånemark System® NP 29282 17,22
 Abutment Screw Brånemark System® RP 29283 17,22
 Abutment Screw Brånemark System® WP 29284 17,22
 Abutment Screw NobRpl NP 29474 17,22
 Abutment Screw NobRpl RP/WP/6.0 29475 17,22
 Abutment Screw Octagon Ti 31984 17

Easy Abutment™ Screw

Screw Easy Abutment™ NobRpl NP 0.75 mm 29839 34
 Screw Easy Abutment™ NobRpl NP 1.5 mm 29840 34
 Screw Easy Abutment™ NobRpl RP/WP/6.0 0.5 mm 29841 34
 Screw Easy Abutment™ NobRpl RP/WP 1.5 mm 28786 34
 Screw Easy Abutment™ Brånemark System® NP 1 mm 30663 34
 Screw Easy Abutment™ Brånemark System® NP 2 mm 30664 34
 Screw Easy Abutment™ Brånemark System® RP 1 mm 30725 34
 Screw Easy Abutment™ Brånemark System® RP 2 mm 30726 34
 Screw Easy Abutment™ Brånemark System® WP 1 mm 30727 34
 Screw Easy Abutment™ Brånemark System® WP 2 mm 30728 34
 Abutment Screw Zirconia for Astra Tech® 3.5 33546 17
 Abutment Screw Zirconia for Astra Tech® 4.0/4.5/5.0 33547 17
 Abutment Screw Titanium for Astra Tech® 3.5 33548 17
 Abutment Screw Titanium for Astra Tech® 4.0/4.5/5.0 33549 17
 Abutment Screw Zirconia for Camlog® 3.3/3.8 33561 17
 Abutment Screw Zirconia for Camlog® 5.0/6.0 33562 17
 Abutment Screw Titanium for Camlog® 3.3/3.8/4.3 33563 17
 Abutment Screw Titanium for Camlog® 5.0/6.0 33564 17

Abutment Replica Ball Abutment

Abutment Replica Ball Abutment NP/RP 29114 44

Easy Abutment™

Abutment Replica Easy Abutment™ NP 30042 34
 Abutment Replica Easy Abutment™ RP 29504 34
 Abutment Replica Easy Abutment™ WP 29505 34
 Abutment Replica Easy Abutment™ Ø6 mm/Brånemark System® WP 29996 34

Multi-unit Abutment

Abutment Replica Multi-unit 5/pkg 29110 24
 Abutment Replica Multi-unit 31161 24
 Abutment Replica Multi-unit Brånemark System® WP 31162 24

Snappy Abutment™

Abutment Replica Snappy Abutment™ NP 32368 20
 Abutment Replica Snappy Abutment™ RP 32369 20
 Abutment Replica Snappy Abutment™ NobRpl WP 32370 20
 Abutment Replica Snappy Abutment™ NobRpl 6.0/Bmk Syst WP 32371 20

C

Ceramic Coping Easy Abutment™

Ceramic Coping Easy Abutment™ Engaging NP 30037 34
 Ceramic Coping Easy Abutment™ Engaging RP 29481 34
 Ceramic Coping Easy Abutment™ Engaging WP 29482 34
 Ceramic Coping Easy Abutment™ Engaging Ø6mm/Brånemark System® WP 30671 34

G

Gold Coping Ball Abutment

Gold Cap Ball Abutment 29025 44
 Gold Cap Ball Abutment Insert 33855 44

Multi-unit Abutment

Gold Coping Multi-unit 5/pkg 29042 24
 Gold Coping Multi-unit 29043 24
 Gold Coping Multi-unit Bmk Syst WP 29044 24
 Gold Coping Bar Multi-unit 29045 24

Guide Pin Implant level

Guide Pin Implant Level Brånemark System® NP 20 mm 31147 16,17,22,27,30,42
 Guide Pin Implant Level Brånemark System® RP 20 mm 31148 16,17,22,27,30,42
 Guide Pin Implant Level Brånemark System® RP 30 mm 31149 16,17,22,27,30,42
 Guide Pin Implant Level Brånemark System® WP 20 mm 31150 16,17,22,27,30,42
 Guide Pin Implant Level NobRpl NP 20 mm 31151 16,17,22,27,30,42
 Guide Pin Implant Level NobRpl RP/WP 20 mm 31152 16,17,22,27,30,42
 Guide Pin Implant Level NobRpl RP/WP 30 mm 31153 16,17,22,27,30,42

Multi-unit Abutment

Guide Pin Multi-unit 10 mm 31154 24
 Guide Pin Multi-unit 10 mm 5/pkg 29102 24
 Guide Pin Multi-unit Brånemark System® WP 10 mm 31156 24
 Guide Pin Multi-unit 20 mm 31155 24
 Guide Pin Multi-unit 20 mm 5/pkg 29103 24

H

Handle for Protection Analogs 29122 57

I

Implant Replica

| | | |
|--|-------|--------------------|
| Implant Replica Brånemark System® RP 5/pkg | 29108 | 16, 17, 22, 27, 30 |
| Implant Replica NobRpl NP | 29498 | 16, 17, 22, 27, 30 |
| Implant Replica NobRpl NP 20/pkg | 29499 | 16, 17, 22, 27, 30 |
| Implant Replica NobRpl RP | 29500 | 16, 17, 22, 27, 30 |
| Implant Replica NobRpl RP 20/pkg | 29501 | 16, 17, 22, 27, 30 |
| Implant Replica NobRpl WP | 29502 | 16, 17, 22, 27, 30 |
| Implant Replica NobRpl WP 20/pkg | 29503 | 16, 17, 22, 27, 30 |
| Implant Replica NobRpl 6.0 | 29995 | 16, 17, 22, 27, 30 |
| Implant Replica Brånemark System® NP | 31158 | 16, 17, 22, 27, 30 |
| Implant Replica Brånemark System® RP | 31159 | 16, 17, 22, 27, 30 |
| Implant Replica Brånemark System® WP | 31160 | 16, 17, 22, 27, 30 |

Impression Coping Easy Abutment™

| | | |
|--|-------|--------|
| Impression Cap Easy Abutment™ NobRpl 6.0 | 28812 | 34, 54 |
| Impression Cap Easy Abutment™ RP | 29496 | 34, 54 |
| Impression Cap Easy Abutment™ WP | 29497 | 34, 54 |
| Impression Cap Easy Abutment™ NP | 30041 | 34, 54 |
| Impression Cap Easy Abutment™ Brånemark System® WP | 30713 | 34, 54 |

Multi-unit Abutment

| | | |
|---|-------|--------|
| Impression Coping Closed Tray Multi-unit | 29090 | 24, 53 |
| Impression Coping Closed Tray Multi-unit Brånemark System® WP | 29092 | 24, 53 |
| Impression Coping Open Tray Multi-unit | 29089 | 24, 53 |
| Impression Coping Open Tray Multi-unit Brånemark System® WP | 29091 | 24, 53 |
| Impression Coping Bar Closed Tray Multi-unit | 29093 | 24, 53 |

Snappy Abutment™

| | | |
|---|-------|--------|
| Impression Coping Snappy Abutment™ NP | 32352 | 20, 54 |
| Impression Coping Snappy Abutment™ RP | 32353 | 20, 54 |
| Impression Coping Snappy Abutment™ NobRpl WP | 32354 | 20, 54 |
| Impression Coping Snappy Abutment™ NobRpl 6.0/Bmk Syst WP | 32355 | 20, 54 |

Bar Implant Level

| | | |
|--|-------|--------|
| Impression Coping Bar Brånemark System® RP | 29076 | 42, 54 |
| Impression Coping Bar NobRpl NP | 29087 | 42, 54 |
| Impression Coping Bar NobRpl RP | 29088 | 42, 54 |

Closed Tray Implant Level

| | | |
|--|-------|----|
| Impression Coping Closed Tray Brånemark System® RP | 29073 | 53 |
| Impression Coping Closed Tray Bmk Syst NP Ø3.5mm | 33462 | 53 |
| Impression Coping Closed Tray Bmk Syst NP Ø4.5mm | 33463 | 53 |
| Impression Coping Closed Tray Bmk Syst RP Ø4mm | 33464 | 53 |
| Impression Coping Closed Tray Bmk Syst RP Ø5mm | 29073 | 53 |
| Impression Coping Closed Tray Bmk Syst WP Ø5mm | 33465 | 53 |
| Impression Coping Closed Tray Bmk Syst WP Ø6mm | 29075 | 53 |
| Impression Coping Closed Tray NobRpl NP Ø3.5mm | 33537 | 53 |
| Impression Coping Closed Tray NobRpl NP Ø4.5mm | 33470 | 53 |
| Impression Coping Closed Tray NobRpl RP Ø4.3mm | 33540 | 53 |
| Impression Coping Closed Tray NobRpl RP Ø5.3mm | 33471 | 53 |
| Impression Coping Closed Tray NobRpl WP Ø5mm | 33472 | 53 |
| Impression Coping Closed Tray NobRpl WP Ø6mm | 29494 | 53 |
| Impression Coping Closed Tray NobRpl 6.0 Ø6mm | 30040 | 53 |
| Impression Coping Closed Tray NobRpl 6.0 Ø7mm | 33473 | 53 |
| Impression Coping Closed Tray Low Profile NobRpl NP Ø3.5mm | 33538 | 53 |
| Impression Coping Closed Tray Low Profile NobRpl NP Ø4.5mm | 33474 | 53 |
| Impression Coping Closed Tray Low Profile NobRpl RP Ø4.3mm | 33541 | 53 |
| Impression Coping Closed Tray Low Profile NobRpl RP Ø5.3mm | 33475 | 53 |
| Impression Coping Closed Tray Low Profile NobRpl WP Ø5mm | 33476 | 53 |
| Impression Coping Closed Tray Low Profile NobRpl WP Ø6mm | 32178 | 53 |
| Impression Coping Closed Tray Low Profile NobRpl 6.0 Ø6mm | 32179 | 53 |
| Impression Coping Closed Tray Low Profile NobRpl 6.0 Ø7mm | 33477 | 53 |
| Impression Coping Closed Tray Plastic NobRpl NP Ø3.5mm | 32425 | 53 |
| Impression Coping Closed Tray Plastic NobRpl NP Ø4.5mm | 33478 | 53 |
| Impression Coping Closed Tray Plastic NobRpl RP Ø4.3mm | 33542 | 53 |
| Impression Coping Closed Tray Plastic NobRpl RP Ø5.3mm | 33479 | 53 |
| Impression Coping Closed Tray Plastic NobRpl WP Ø5mm | 33480 | 53 |
| Impression Coping Closed Tray Plastic NobRpl WP Ø6mm | 32427 | 53 |
| Impression Coping Closed Tray Plastic NobRpl 6.0 Ø6mm | 32428 | 53 |
| Impression Coping Closed Tray Plastic NobRpl 6.0 Ø7mm | 33481 | 53 |

Open Tray Implant Level

| | | |
|--|-------|----|
| Impression Coping Open Tray Bmk Syst NP Ø3.5mm | 33458 | 55 |
| Impression Coping Open Tray Bmk Syst NP Ø4.5mm | 33459 | 55 |
| Impression Coping Open Tray Bmk Syst RP Ø4mm | 33460 | 55 |
| Impression Coping Open Tray Bmk Syst RP Ø5mm | 29072 | 55 |
| Impression Coping Open Tray Bmk Syst WP Ø5mm | 33461 | 55 |
| Impression Coping Open Tray Bmk Syst WP Ø6mm | 29074 | 55 |
| Impression Coping Open Tray NobRpl NP Ø3.5mm | 29485 | 55 |
| Impression Coping Open Tray NobRpl NP Ø4.5mm | 33466 | 55 |
| Impression Coping Open Tray NobRpl RP Ø4.3mm | 33539 | 55 |
| Impression Coping Open Tray NobRpl RP Ø5.3mm | 33467 | 55 |
| Impression Coping Open Tray NobRpl WP Ø5mm | 33468 | 55 |
| Impression Coping Open Tray NobRpl WP Ø6mm | 29493 | 55 |
| Impression Coping Open Tray NobRpl 6.0 Ø6mm | 30039 | 55 |
| Impression Coping Open Tray NobRpl 6.0 Ø7mm | 33469 | 55 |

K

Kit

Procera®

| | | |
|--|-------|----|
| Procera® Abutment 3D CADD Kit | 31967 | 17 |
| Procera® Abutment Wax-up Kit | 31217 | 17 |
| Procera® Abutment Wax-up Kit for Astra Tech® | 33550 | 17 |
| Procera® Abutment 3D CADD Kit for Astra Tech® | 33552 | 17 |
| Procera® Abutment Wax-up Kit for Camlog® | 33565 | 17 |
| Procera® Abutment 3D CADD Kit for Camlog® | 33566 | 17 |
| Procera® Abutment 3D CADD kit Octagon | 31567 | 17 |
| Procera® Esthetic Abutment Brånemark System® Selection Kit | 33435 | 16 |
| Procera® Esthetic Abutment Bmk Syst Selection Kit Box | 33483 | 16 |
| Procera® Esthetic Abutment NobelReplace™ Selection Kit | 33316 | 16 |
| Procera® Esthetic Abutment NobelReplace™ Selection Kit Box | 33484 | 16 |

Try-in Abutments

| | | |
|---------------------------------------|-------|----|
| NobelReplace™ Try-in Abutment Kit | 32414 | 51 |
| Brånemark System® Try-in Abutment Kit | 32415 | 51 |
| Try-in Abutment Kit Box | 32429 | 51 |

L

Lab Screw

Implant Level

| | | |
|--|-------|----------------|
| Lab Screw Implant Level Brånemark System® NP | 31168 | 17, 22, 27, 30 |
| Lab Screw Implant Level Brånemark System® RP 5/pkg | 29290 | 17, 22, 27, 30 |
| Lab Screw Implant Level Brånemark System® WP | 31169 | 17, 22, 27, 30 |
| Lab Screw Implant Level NobRpl NP | 31170 | 17, 22, 27, 30 |
| Lab Screw Implant Level NobRpl RP/WP/6.0 5/pkg | 29293 | 17, 22, 27, 30 |

Multi-unit Abutment

| | | |
|---|-------|----|
| Lab Screw Multi-unit 5/pkg | 29287 | 24 |
| Lab Screw Multi-unit Brånemark System® WP | 31163 | 24 |

Multi-unit Angled Abutment

| | | |
|--|-------|----|
| Lab Screw Multi-unit Angled Brånemark System® NP | 31164 | 24 |
| Lab Screw Multi-unit Angled Brånemark System® RP | 31165 | 24 |
| Lab Screw Multi-unit Angled NobRpl NP | 31166 | 24 |
| Lab Screw Multi-unit Angled NobRpl RP | 31167 | 24 |

M

| | | |
|---|-------|----|
| Manual Torque Wrench Adapter Prosthetic | 29167 | 57 |
|---|-------|----|

N

NobelRondo™

| | | |
|---|-------|-------------------|
| NobelRondo™ AL Dentin A0 Super Bright 20 g | 31769 | 8, 10, 12, 27, 30 |
| NobelRondo™ AL Dentin B0 Super Bright 20 g | 31770 | 8, 10, 12, 27, 30 |
| NobelRondo™ AL Dentin B1 High Value 20 g | 31771 | 8, 10, 12, 27, 30 |
| NobelRondo™ AL Dentin A1 High Value 20 g | 31772 | 8, 10, 12, 27, 30 |
| NobelRondo™ AL Dentin A2 Warm Chroma 20 g | 31773 | 8, 10, 12, 27, 30 |
| NobelRondo™ AL Dentin A3 Warm Chroma 20 g | 31774 | 8, 10, 12, 27, 30 |
| NobelRondo™ AL Dentin A3.5 Warm Chroma 20 g | 31785 | 8, 10, 12, 27, 30 |
| NobelRondo™ AL Dentin A4 Warm Chroma 20 g | 31786 | 8, 10, 12, 27, 30 |
| NobelRondo™ AL Dentin B4 Sunny Chroma 20 g | 31787 | 8, 10, 12, 27, 30 |
| NobelRondo™ AL Dentin B3 Sunny Chroma 20 g | 31788 | 8, 10, 12, 27, 30 |
| NobelRondo™ AL Dentin B2 Sunny Chroma 20 g | 31789 | 8, 10, 12, 27, 30 |
| NobelRondo™ AL Dentin D2 Pearl Chroma 20 g | 31790 | 8, 10, 12, 27, 30 |
| NobelRondo™ AL Dentin D3 Pearl Chroma 20 g | 31791 | 8, 10, 12, 27, 30 |
| NobelRondo™ AL Dentin C3 Low Value 20 g | 31792 | 8, 10, 12, 27, 30 |
| NobelRondo™ AL Dentin C2 Low Value 20 g | 31793 | 8, 10, 12, 27, 30 |
| NobelRondo™ AL Dentin C1 Low Value 20 g | 31794 | 8, 10, 12, 27, 30 |
| NobelRondo™ AL Base Liner Super Bright 20 g | 31795 | 8, 10, 12, 27, 30 |
| NobelRondo™ AL Base Liner High Value 20 g | 31796 | 8, 10, 12, 27, 30 |
| NobelRondo™ AL Base Liner Warm Chroma 20 g | 31797 | 8, 10, 12, 27, 30 |
| NobelRondo™ AL Base Liner Sunny Chroma 20 g | 31798 | 8, 10, 12, 27, 30 |
| NobelRondo™ AL Base Liner Pearl Chroma 20 g | 31799 | 8, 10, 12, 27, 30 |
| NobelRondo™ AL Base Liner Low Value 20 g | 31800 | 8, 10, 12, 27, 30 |
| NobelRondo™ AL Inner Core Super Bright 20 g | 31801 | 8, 10, 12, 27, 30 |
| NobelRondo™ AL Inner Core High Value 20 g | 31802 | 8, 10, 12, 27, 30 |
| NobelRondo™ AL Inner Core Warm Chroma 20 g | 31803 | 8, 10, 12, 27, 30 |
| NobelRondo™ AL Inner Core Sunny Chroma 20 g | 31804 | 8, 10, 12, 27, 30 |
| NobelRondo™ AL Inner Core Pearl Chroma 20 g | 31805 | 8, 10, 12, 27, 30 |
| NobelRondo™ AL Inner Core Low Value 20 g | 31806 | 8, 10, 12, 27, 30 |
| NobelRondo™ AL Chromatizer Warm Chroma 20 g | 31807 | 8, 10, 12, 27, 30 |
| NobelRondo™ AL Chromatizer Orange Warm Chroma 20 g | 31808 | 8, 10, 12, 27, 30 |
| NobelRondo™ AL Chromatizer Sunny Chroma 20 g | 31809 | 8, 10, 12, 27, 30 |
| NobelRondo™ AL Chromatizer Low Value 20 g | 31810 | 8, 10, 12, 27, 30 |
| NobelRondo™ AL Opal Enamel 0 Super Bright 20 g | 31811 | 8, 10, 12, 27, 30 |
| NobelRondo™ AL Special Enamel Opal Blue Super Bright 20 g | 31812 | 8, 10, 12, 27, 30 |
| NobelRondo™ AL Special Enamel Opal Blue Light High Value 20 g | 31813 | 8, 10, 12, 27, 30 |
| NobelRondo™ AL Opal Enamel 1 High Value 20 g | 31814 | 8, 10, 12, 27, 30 |
| NobelRondo™ AL Opal Enamel 2 20 g | 31815 | 8, 10, 12, 27, 30 |
| NobelRondo™ AL Enamel 3 20 g | 31816 | 8, 10, 12, 27, 30 |
| NobelRondo™ AL Transpa Opal 20 g | 31817 | 8, 10, 12, 27, 30 |
| NobelRondo™ AL Transpa Clear 20 g | 31818 | 8, 10, 12, 27, 30 |
| NobelRondo™ AL Enamel 4 Sunny Chroma 20 g | 31819 | 8, 10, 12, 27, 30 |
| NobelRondo™ AL Opal Enamel 3 Sunny Chroma 20 g | 31820 | 8, 10, 12, 27, 30 |
| NobelRondo™ AL Transpa Neutral 20 g | 31821 | 8, 10, 12, 27, 30 |

| | | |
|---|-------|-------------------|
| NobelRondo™ AL Special Enamel | | |
| Opal Grey Low Value 20 g | 31824 | 8, 10, 12, 27, 30 |
| NobelRondo™ AL Enamel 2 Low Value 20 g | 31825 | 8, 10, 12, 27, 30 |
| NobelRondo™ AL Special Enamel | | |
| Opal Smoky Low Value 20 g | 31826 | 8, 10, 12, 27, 30 |
| NobelRondo™ AL Internal Modifier Ivory 12 g | 31827 | 8, 10, 12, 27, 30 |
| NobelRondo™ AL Internal Modifier Flamingo 12 g | 31828 | 8, 10, 12, 27, 30 |
| NobelRondo™ AL Internal Modifier Creme 12 g | 31829 | 8, 10, 12, 27, 30 |
| NobelRondo™ AL Internal Modifier Peach 12 g | 31830 | 8, 10, 12, 27, 30 |
| NobelRondo™ AL Internal Modifier Caramel 12 g | 31831 | 8, 10, 12, 27, 30 |
| NobelRondo™ AL Internal Modifier Amber 12 g | 31832 | 8, 10, 12, 27, 30 |
| NobelRondo™ AL Internal Modifier Bamboo 12 g | 31833 | 8, 10, 12, 27, 30 |
| NobelRondo™ AL Internal Modifier Honey 12 g | 31834 | 8, 10, 12, 27, 30 |
| NobelRondo™ AL Internal Modifier Pearl 12 g | 31835 | 8, 10, 12, 27, 30 |
| NobelRondo™ AL Internal Modifier Taiga 12 g | 31836 | 8, 10, 12, 27, 30 |
| NobelRondo™ AL Shoulder Super Bright 12 g | 31837 | 8, 10, 12, 27, 30 |
| NobelRondo™ AL Shoulder High Value 12 g | 31838 | 8, 10, 12, 27, 30 |
| NobelRondo™ AL Shoulder Warm Chroma 12 g | 31839 | 8, 10, 12, 27, 30 |
| NobelRondo™ AL Shoulder Sunny Chroma 12 g | 31840 | 8, 10, 12, 27, 30 |
| NobelRondo™ AL Shoulder Pearl Chroma 12 g | 31841 | 8, 10, 12, 27, 30 |
| NobelRondo™ AL Shoulder Low Value 12 g | 31842 | 8, 10, 12, 27, 30 |
| NobelRondo™ AL Colored Translucency Lemon 12 g | 31843 | 8, 10, 12, 27, 30 |
| NobelRondo™ AL Colored Translucency Mandarin 12 g | 31844 | 8, 10, 12, 27, 30 |
| NobelRondo™ AL Colored Translucency Melon 12 g | 31845 | 8, 10, 12, 27, 30 |
| NobelRondo™ AL Colored Translucency Orange 12 g | 31846 | 8, 10, 12, 27, 30 |
| NobelRondo™ AL Colored Translucency Papaya 12 g | 31847 | 8, 10, 12, 27, 30 |
| NobelRondo™ AL Colored Translucency Plum 12 g | 31848 | 8, 10, 12, 27, 30 |
| NobelRondo™ AL Mother-of-Pearl Oyster White 12 g | 31849 | 8, 10, 12, 27, 30 |
| NobelRondo™ AL Mother-of-Pearl Light Coral 12 g | 31850 | 8, 10, 12, 27, 30 |
| NobelRondo™ AL Mother-of-Pearl Pale Shell 12 g | 31851 | 8, 10, 12, 27, 30 |
| NobelRondo™ AL Mother-of-Pearl Pink Pearl 12 g | 31852 | 8, 10, 12, 27, 30 |
| NobelRondo™ AL Intensive Liner White 12 g | 31853 | 8, 10, 12, 27, 30 |
| NobelRondo™ AL Intensive Liner Creme 12 g | 31854 | 8, 10, 12, 27, 30 |
| NobelRondo™ AL Intensive Liner Orange 12 g | 31855 | 8, 10, 12, 27, 30 |
| NobelRondo™ AL Intensive Liner Sunny 12 g | 31856 | 8, 10, 12, 27, 30 |
| NobelRondo™ AL Intensive Liner Pink 12 g | 31857 | 8, 10, 12, 27, 30 |
| NobelRondo™ AL Intensive Liner Grey-Violet 12 g | 31858 | 8, 10, 12, 27, 30 |
| NobelRondo™ AL Stain White 3 g | 31859 | 8, 10, 12, 27, 30 |
| NobelRondo™ AL Stain Pink 3 g | 31860 | 8, 10, 12, 27, 30 |
| NobelRondo™ AL Stain Maize 3 g | 31861 | 8, 10, 12, 27, 30 |
| NobelRondo™ AL Stain Ivory 3 g | 31862 | 8, 10, 12, 27, 30 |
| NobelRondo™ AL Stain Peach 3 g | 31863 | 8, 10, 12, 27, 30 |
| NobelRondo™ AL Stain Caramel 3 g | 31864 | 8, 10, 12, 27, 30 |
| NobelRondo™ AL Stain Orange 3 g | 31865 | 8, 10, 12, 27, 30 |
| NobelRondo™ AL Stain Khaki 3 g | 31866 | 8, 10, 12, 27, 30 |
| NobelRondo™ AL Stain Olive 3 g | 31867 | 8, 10, 12, 27, 30 |
| NobelRondo™ AL Stain Chestnut 3 g | 31868 | 8, 10, 12, 27, 30 |
| NobelRondo™ AL Stain Steel 3 g | 31869 | 8, 10, 12, 27, 30 |
| NobelRondo™ AL Stain Violet 3 g | 31870 | 8, 10, 12, 27, 30 |
| NobelRondo™ AL Glaze Powder Glossy Pearl 3 g | 31871 | 8, 10, 12, 27, 30 |
| NobelRondo™ AL Correction Powder 3 g | 31872 | 8, 10, 12, 27, 30 |
| NobelRondo™ Build-up Liquid Quick 250 ml | 31873 | 8, 10, 12, 27, 30 |
| NobelRondo™ Liner Liquid 50 ml | 31874 | 8, 10, 12, 27, 30 |
| NobelRondo™ Stain Liquid 15 ml | 31880 | 8, 10, 12, 27, 30 |
| NobelRondo™ Build-up Liquid Soft 250 ml | 31881 | 8, 10, 12, 27, 30 |
| NobelRondo™ AL – Creative Circle | 31882 | 8, 10, 12, 27, 30 |
| NobelRondo™ AL – Basic Circle | 31883 | 8, 10, 12, 27, 30 |
| NobelRondo™ AL – Master Circle | 31884 | 8, 10, 12, 27, 30 |
| NobelRondo™ Shade Guides | 31885 | 8, 10, 12, 27, 30 |
| NobelRondo™ AL Starter Set | 31886 | 8, 10, 12, 27, 30 |
| NobelRondo™ Zirconia Dentin A0 SB 100g | 33335 | 8, 10, 12, 27, 30 |
| NobelRondo™ Zirconia Dentin B0 SB 100g | 33336 | 8, 10, 12, 27, 30 |
| NobelRondo™ Zirconia Dentin B1 HV 100g | 33337 | 8, 10, 12, 27, 30 |
| NobelRondo™ Zirconia Dentin A1 HV 100g | 33338 | 8, 10, 12, 27, 30 |
| NobelRondo™ Zirconia Dentin A2 WC 100g | 33339 | 8, 10, 12, 27, 30 |
| NobelRondo™ Zirconia Dentin A3 WC 100g | 33340 | 8, 10, 12, 27, 30 |
| NobelRondo™ Zirconia Dentin A3.5 WC 100g | 33341 | 8, 10, 12, 27, 30 |
| NobelRondo™ Zirconia Dentin A4 WC 100g | 33342 | 8, 10, 12, 27, 30 |
| NobelRondo™ Zirconia Dentin B4 SC 100g | 33343 | 8, 10, 12, 27, 30 |
| NobelRondo™ Zirconia Dentin B3 SC 100g | 33344 | 8, 10, 12, 27, 30 |
| NobelRondo™ Zirconia Dentin B2 SC 100g | 33345 | 8, 10, 12, 27, 30 |
| NobelRondo™ Zirconia Dentin D2 PC 100g | 33346 | 8, 10, 12, 27, 30 |
| NobelRondo™ Zirconia Dentin D3 PC 100g | 33347 | 8, 10, 12, 27, 30 |
| NobelRondo™ Zirconia Dentin C3 LV 100g | 33348 | 8, 10, 12, 27, 30 |
| NobelRondo™ Zirconia Dentin C2 LV 100g | 33349 | 8, 10, 12, 27, 30 |
| NobelRondo™ Zirconia Dentin C1 LV 100g | 33350 | 8, 10, 12, 27, 30 |
| NobelRondo™ Zirconia Enamel 3 100g | 33351 | 8, 10, 12, 27, 30 |
| NobelRondo™ Zirconia Enamel 4 SC 100g | 33352 | 8, 10, 12, 27, 30 |
| NobelRondo™ Zirconia Enamel 2 LV 100g | 33353 | 8, 10, 12, 27, 30 |
| NobelRondo™ Zr Opal Enamel 0 SB 100g | 33354 | 8, 10, 12, 27, 30 |
| NobelRondo™ Zr Opal Enamel 1 HV 100g | 33355 | 8, 10, 12, 27, 30 |
| NobelRondo™ Zr Opal Enamel 2 100g | 33356 | 8, 10, 12, 27, 30 |
| NobelRondo™ Zr Opal Enamel 3 SC 100g | 33357 | 8, 10, 12, 27, 30 |
| NobelRondo™ Zirconia Inner Core HV 100g | 33358 | 8, 10, 12, 27, 30 |
| NobelRondo™ Zirconia Inner Core WC 100g | 33359 | 8, 10, 12, 27, 30 |
| NobelRondo™ Alumina Dentin A0 SB 100g | 33360 | 8, 10, 12, 27, 30 |
| NobelRondo™ Alumina Dentin B0 SB 100g | 33361 | 8, 10, 12, 27, 30 |
| NobelRondo™ Alumina Dentin B1 HV 100g | 33362 | 8, 10, 12, 27, 30 |
| NobelRondo™ Alumina Dentin A1 HV 100g | 33363 | 8, 10, 12, 27, 30 |
| NobelRondo™ Alumina Dentin A2 WC 100g | 33364 | 8, 10, 12, 27, 30 |
| NobelRondo™ Alumina Dentin A3 WC 100g | 33365 | 8, 10, 12, 27, 30 |
| NobelRondo™ Alumina Dentin A3.5 WC 100g | 33366 | 8, 10, 12, 27, 30 |
| NobelRondo™ Alumina Dentin A4 WC 100g | 33367 | 8, 10, 12, 27, 30 |
| NobelRondo™ Alumina Dentin B4 SC 100g | 33368 | 8, 10, 12, 27, 30 |
| NobelRondo™ Alumina Dentin B3 SC 100g | 33369 | 8, 10, 12, 27, 30 |
| NobelRondo™ Alumina Dentin B2 SC 100g | 33370 | 8, 10, 12, 27, 30 |
| NobelRondo™ Alumina Dentin D2 PC 100g | 33371 | 8, 10, 12, 27, 30 |
| NobelRondo™ Alumina Dentin D3 PC 100g | 33372 | 8, 10, 12, 27, 30 |
| NobelRondo™ Zirconia Dentin A0 Super Bright 20 g | 32435 | 8, 10, 12, 27, 30 |
| NobelRondo™ Zirconia Dentin B0 Super Bright 20 g | 32436 | 8, 10, 12, 27, 30 |
| NobelRondo™ Zirconia Dentin B1 High Value 20 g | 32437 | 8, 10, 12, 27, 30 |
| NobelRondo™ Zirconia Dentin A1 High Value 20 g | 32438 | 8, 10, 12, 27, 30 |
| NobelRondo™ Zirconia Dentin A2 Warm Chroma 20 g | 32439 | 8, 10, 12, 27, 30 |
| NobelRondo™ Zirconia Dentin A3 Warm Chroma 20 g | 32440 | 8, 10, 12, 27, 30 |
| NobelRondo™ Zirconia Dentin A3.5 Warm Chroma 20 g | 32441 | 8, 10, 12, 27, 30 |
| NobelRondo™ Zirconia Dentin A4 Warm Chroma 20 g | 32442 | 8, 10, 12, 27, 30 |
| NobelRondo™ Zirconia Dentin B4 Sunny Chroma 20 g | 32443 | 8, 10, 12, 27, 30 |
| NobelRondo™ Zirconia Dentin B3 Sunny Chroma 20 g | 32444 | 8, 10, 12, 27, 30 |
| NobelRondo™ Zirconia Dentin B2 Sunny Chroma 20 g | 32445 | 8, 10, 12, 27, 30 |
| NobelRondo™ Zirconia Dentin D2 Pearl Chroma 20 g | 32446 | 8, 10, 12, 27, 30 |
| NobelRondo™ Zirconia Dentin D3 Pearl Chroma 20 g | 32447 | 8, 10, 12, 27, 30 |
| NobelRondo™ Zirconia Dentin C3 Low Value 20 g | 32448 | 8, 10, 12, 27, 30 |
| NobelRondo™ Zirconia Dentin C2 Low Value 20 g | 32449 | 8, 10, 12, 27, 30 |
| NobelRondo™ Zirconia Dentin C1 Low Value 20 g | 32450 | 8, 10, 12, 27, 30 |
| NobelRondo™ Zirconia Base Liner Super Bright 20 g | 32451 | 8, 10, 12, 27, 30 |
| NobelRondo™ Zirconia Base Liner High Value 20 g | 32452 | 8, 10, 12, 27, 30 |
| NobelRondo™ Zirconia Base Liner Warm Chroma 20 g | 32453 | 8, 10, 12, 27, 30 |
| NobelRondo™ Zirconia Base Liner Sunny Chroma 20 g | 32454 | 8, 10, 12, 27, 30 |
| NobelRondo™ Zirconia Base Liner Pearl Chroma 20 g | 32455 | 8, 10, 12, 27, 30 |
| NobelRondo™ Zirconia Base Liner Low Value 20 g | 32456 | 8, 10, 12, 27, 30 |
| NobelRondo™ Zirconia Gingiva 1 20g | 33388 | 8, 10, 12, 27, 30 |
| NobelRondo™ Zirconia Gingiva 2 20g | 33387 | 8, 10, 12, 27, 30 |
| NobelRondo™ Zirconia Gingiva 3 20g | 33388 | 8, 10, 12, 27, 30 |
| NobelRondo™ Zirconia Gingiva 4 20g | 33389 | 8, 10, 12, 27, 30 |
| NobelRondo™ Zirconia Gingiva 5 20g | 33390 | 8, 10, 12, 27, 30 |
| NobelRondo™ Zirconia Gingiva 6 20g | 33391 | 8, 10, 12, 27, 30 |
| NobelRondo™ Zirconia Gingiva Set | 33437 | 8, 10, 12, 27, 30 |
| NobelRondo™ Zirconia Gingiva Shade Guide | 33439 | 8, 10, 12, 27, 30 |
| NobelRondo™ Zirconia Inner Core Super Bright 20 g | 32457 | 8, 10, 12, 27, 30 |
| NobelRondo™ Zirconia Inner Core High Value 20 g | 32458 | 8, 10, 12, 27, 30 |
| NobelRondo™ Zirconia Inner Core Warm Chroma 20 g | 32459 | 8, 10, 12, 27, 30 |
| NobelRondo™ Zirconia Inner Core Sunny Chroma 20 g | 32460 | 8, 10, 12, 27, 30 |
| NobelRondo™ Zirconia Inner Core Pearl Chroma 20 g | 32461 | 8, 10, 12, 27, 30 |
| NobelRondo™ Zirconia Inner Core Low Value 20 g | 32462 | 8, 10, 12, 27, 30 |
| NobelRondo™ Zirconia Chromatizer Warm Chroma 20 g | 32463 | 8, 10, 12, 27, 30 |
| NobelRondo™ Zirconia Chromatizer Orange Warm Chroma 20 g | 32464 | 8, 10, 12, 27, 30 |
| NobelRondo™ Zirconia Chromatizer Sunny Chroma 20 g | 32465 | 8, 10, 12, 27, 30 |
| NobelRondo™ Zirconia Chromatizer Low Value 20 g | 32466 | 8, 10, 12, 27, 30 |
| NobelRondo™ Zirconia Opal Enamel 0 Super Bright 20 g | 32467 | 8, 10, 12, 27, 30 |
| NobelRondo™ Zirconia Special Enamel Opal Blue Super Bright 20 g | 32468 | 8, 10, 12, 27, 30 |
| NobelRondo™ Zirconia Special Enamel | | |
| Opal Blue Light High Value 20 g | 32469 | 8, 10, 12, 27, 30 |
| NobelRondo™ Zirconia Opal Enamel 1 High Value 20 g | 32470 | 8, 10, 12, 27, 30 |
| NobelRondo™ Zirconia Opal Enamel 2 20 g | 32471 | 8, 10, 12, 27, 30 |
| NobelRondo™ Zirconia Enamel 3 20 g | 32472 | 8, 10, 12, 27, 30 |
| NobelRondo™ Zirconia Transpa Opal 20 g | 32473 | 8, 10, 12, 27, 30 |
| NobelRondo™ Zirconia Transpa Clear 20 g | 32474 | 8, 10, 12, 27, 30 |
| NobelRondo™ Zirconia Enamel 4 Sunny Chroma 20 g | 32475 | 8, 10, 12, 27, 30 |
| NobelRondo™ Zirconia Opal Enamel 3 Sunny Chroma 20 g | 32476 | 8, 10, 12, 27, 30 |
| NobelRondo™ Zirconia Transpa Neutral 20 g | 32477 | 8, 10, 12, 27, 30 |
| NobelRondo™ Zirconia Special Enamel Opal Grey Low Value 20 g | 32478 | 8, 10, 12, 27, 30 |
| NobelRondo™ Zirconia Enamel 2 Low Value 20 g | 32479 | 8, 10, 12, 27, 30 |
| NobelRondo™ Zirconia Special Enamel Opal Smoky Low Value 20 g | 32480 | 8, 10, 12, 27, 30 |
| NobelRondo™ Zirconia Internal Modifier Ivory 12 g | 32481 | 8, 10, 12, 27, 30 |
| NobelRondo™ Zirconia Internal Modifier Flamingo 12 g | 32482 | 8, 10, 12, 27, 30 |
| NobelRondo™ Zirconia Internal Modifier Creme 12 g | 32483 | 8, 10, 12, 27, 30 |
| NobelRondo™ Zirconia Internal Modifier Peach 12 g | 32484 | 8, 10, 12, 27, 30 |
| NobelRondo™ Zirconia Internal Modifier Caramel 12 g | 32485 | 8, 10, 12, 27, 30 |
| NobelRondo™ Zirconia Internal Modifier Amber 12 g | 32486 | 8, 10, 12, 27, 30 |
| NobelRondo™ Zirconia Internal Modifier Bamboo 12 g | 32487 | 8, 10, 12, 27, 30 |
| NobelRondo™ Zirconia Internal Modifier Honey 12 g | 32488 | 8, 10, 12, 27, 30 |
| NobelRondo™ Zirconia Internal Modifier Pearl 12 g | 32489 | 8, 10, 12, 27, 30 |
| NobelRondo™ Zirconia Internal Modifier Taiga 12 g | 32490 | 8, 10, 12, 27, 30 |
| NobelRondo™ Zirconia Shoulder Super Bright 12 g | 32491 | 8, 10, 12, 27, 30 |
| NobelRondo™ Zirconia Shoulder High Value 12 g | 32492 | 8, 10, 12, 27, 30 |
| NobelRondo™ Zirconia Shoulder Warm Chroma 12 g | 32493 | 8, 10, 12, 27, 30 |
| NobelRondo™ Zirconia Shoulder Sunny Chroma 12 g | 32494 | 8, 10, 12, 27, 30 |
| NobelRondo™ Zirconia Shoulder Pearl Chroma 12 g | 32495 | 8, 10, 12, 27, 30 |
| NobelRondo™ Zirconia Shoulder Low Value 12 g | 32496 | 8, 10, 12, 27, 30 |
| NobelRondo™ Zirconia Colored Translucency Lemon 12 g | 32497 | 8, 10, 12, 27, 30 |
| NobelRondo™ Zirconia Colored Translucency Mandarin 12 g | 32498 | 8, 10, 12, 27, 30 |
| NobelRondo™ Zirconia Colored Translucency Melon 12 g | 32499 | 8, 10, 12, 27, 30 |
| NobelRondo™ Zirconia Colored Translucency Orange 12 g | 32500 | 8, 10, 12, 27, 30 |
| NobelRondo™ Zirconia Colored Translucency Papaya 12 g | 32501 | 8, 10, 12, 27, 30 |
| NobelRondo™ Zirconia Colored Translucency Plum 12 g | 32502 | 8, 10, 12, 27, 30 |
| NobelRondo™ Zirconia Mother-of-Pearl Oyster White 12 g | 32503 | 8, 10, 12, 27, 30 |
| NobelRondo™ Zirconia Mother-of-Pearl Light Coral 12 g | 32504 | 8, 10, 12, 27, 30 |
| NobelRondo™ Zirconia Mother-of-Pearl Pale Shell 12 g | 32505 | 8, 10, 12, 27, 30 |
| NobelRondo™ Zirconia Mother-of-Pearl Pink Pearl 12 g | 32506 | 8, 10, 12, 27, 30 |
| NobelRondo™ Zirconia Intensive Liner White 12 g | 32507 | 8, 10, 12, 27, 30 |
| NobelRondo™ Zirconia Intensive Liner Creme 12 g | 32508 | 8, 10, 12, 27, 30 |
| NobelRondo™ Zirconia Intensive Liner Orange 12 g | 32509 | 8, 10, 12, 27, 30 |
| NobelRondo™ Zirconia Intensive Liner Sunny 12 g | 32510 | 8, 10, 12, 27, 30 |
| NobelRondo™ Zirconia Intensive Liner Pink 12 g | 32511 | 8, 10, 12, 27, 30 |

NobelRondo™ Zirconia Intensive Liner Grey-Violet 12 g 32512 8,10,12,27,30
NobelRondo™ Zirconia Stain White 3 g 32513 8,10,12,27,30
NobelRondo™ Zirconia Stain Pink 3 g 32514 8,10,12,27,30
NobelRondo™ Zirconia Stain Maize 3 g 32515 8,10,12,27,30
NobelRondo™ Zirconia Stain Ivory 3 g 32516 8,10,12,27,30
NobelRondo™ Zirconia Stain Peach 3 g 32517 8,10,12,27,30
NobelRondo™ Zirconia Stain Caramel 3 g 32518 8,10,12,27,30
NobelRondo™ Zirconia Stain Orange 3 g 32519 8,10,12,27,30
NobelRondo™ Zirconia Stain Khaki 3 g 32520 8,10,12,27,30
NobelRondo™ Zirconia Stain Olive 3 g 32521 8,10,12,27,30
NobelRondo™ Zirconia Stain Chestnut 3 g 32522 8,10,12,27,30
NobelRondo™ Zirconia Stain Steel 3 g 32523 8,10,12,27,30
NobelRondo™ Zirconia Stain Violet 3 g 32524 8,10,12,27,30
NobelRondo™ Zirconia Glaze Powder Glossy Pearl 3 g 32525 8,10,12,27,30
NobelRondo™ Zirconia Correction Powder 3 g 32526 8,10,12,27,30
NobelRondo™ Zirconia – Creative Circle 32527 8,10,12,27,30
NobelRondo™ Zirconia – Basic Circle 32528 8,10,12,27,30
NobelRondo™ Zirconia – Master Circle 32529 8,10,12,27,30
NobelRondo™ Zirconia Starter Set 32531 8,10,12,27,30

P

Plastic Coping

Easy Abutment™
 Plastic Coping Easy Abutment™ Engaging NP 30000 34
 Plastic Coping Easy Abutment™ Engaging RP 29477 34
 Plastic Coping Easy Abutment™ Engaging WP 29478 34
 Plastic Coping Easy Abutment™
 Engaging Ø6mm/Brånemark System® WP 29993 34
 Plastic Coping Easy Abutment™
 Non-Engaging NP 2/pkg 30036 34
 Plastic Coping Easy Abutment™
 Non-Engaging RP 2/pkg 29479 34
 Plastic Coping Easy Abutment™
 Non-Engaging WP 2/pkg 29480 34
 Plastic Coping Easy Abutment™
 Non-Eng Ø6mm/Brånemark System® WP 2/pkg 29994 34

Plastic/Temporary Coping

Esthetic Abutment
 Plastic/Temp Coping Esthetic Abutment NP 32408 22
 Plastic/Temp Coping Esthetic Abutment RP 32409 22
 Plastic/Temp Coping Esthetic Abutment NobRpl WP 32410 22
 Plastic/Temp Coping Esthetic Abutment
 NobRpl 6.0/Bmk WP 32172 22
 Plastic/Temp Coping 15° Esthetic Abutment NP 32787 22
 Plastic/Temp Coping 15° Esthetic Abutment RP 32788 22
 Plastic/Temp Coping 15°
 Esthetic Abutment NobRpl WP 32789 22
 Plastic/Temp Coping 15°
 Esthetic Abutment NobRpl 6.0/Bmk WP 32790 22

Snappy Abutment™

Plastic/Temp Coping Eng Snappy Abutment™ NP/RP 32356 20
 Plastic/Temp Coping Eng
 Snappy Abutment™ NobRpl WP 32358 20
 Plastic/Temp Coping Eng
 Snappy Abutment™ NobRpl 6.0/Bmk WP 32359 20
 Plastic/Temp Coping Non-Eng
 Snappy Abutment™ NP/RP 32360 20
 Plastic/Temp Coping Non-Eng
 Snappy Abutment™ NobRpl WP 32362 20
 Plastic/Temp Coping Non-Eng
 Snappy Abutment NobRpl 6.0/Bmk WP 32363 20

Position Locators

Position Locator Model Bmk Syst NP 33413 27,30
 Position Locator Model Bmk Syst RP 33414 27,30
 Position Locator Model Bmk Syst WP 33415 27,30
 Position Locator Model NobRpl NP 33416 27,30
 Position Locator Model NobRpl RP 33417 27,30
 Position Locator Model NobRpl WP 33418 27,30
 Position Locator Model NobRpl 6.0 33419 27,30
 Position Locator Model Octagon 4.8 33420 27,30
 Position Locator Model Octagon 6.5 33421 27,30
 Position Locator Model Multi-unit 33422 27,30
 Position Locator Model Multi-unit WP 33423 27,30
 Position Locator Bridge Bmk Syst NP 33424 27,30
 Position Locator Bridge Bmk Syst RP 33425 27,30
 Position Locator Bridge Bmk Syst WP 33426 27,30
 Position Locator Bridge NobRpl NP 33427 27,30
 Position Locator Bridge NobRpl RP 33428 27,30
 Position Locator Bridge NobRpl WP 33429 27,30
 Position Locator Bridge NobRpl 6.0 33430 27,30
 Position Locator Bridge Octagon 4.8 33431 27,30
 Position Locator Bridge Octagon 6.5 33432 27,30
 Position Locator Bridge Multi-unit 33433 27,30
 Position Locator Bridge Multi-unit WP 33434 27,30

Procera® Forte parts

Holder Procera® Implant Bridge A-5288-0043 27,30
 2.5mm Stylus Procera® Forte A-5288-0044 27,30

Prosthetic Screw

Prosthetic Screw Multi-unit 29285 24,30
 Prosthetic Screw Multi-unit Brånemark System® WP 29286 24,30

Protection Analog

Protection Analog Brånemark System® NP 5/pkg 29116 16,17,22,27,30
 Protection Analog Brånemark System® RP 5/pkg 29117 16,17,22,27,30
 Protection Analog Brånemark System® WP 5/pkg 29118 16,17,22,27,30
 Protection Analog NobRpl NP 5/pkg 29119 16,17,22,27,30
 Protection Analog NobRpl RP 5/pkg 29120 16,17,22,27,30
 Protection Analog NobRpl WP 5/pkg 29121 16,17,22,27,30
 Protection Analog NobRpl 6.0 5/pkg 30043 16,17,22,27,30
 Protection Analog Multi-unit 5/pkg 29123 16,17,22,27,30
 Protection Analog Multi-unit
 Brånemark System® WP 5/pkg 29124 16,17,22,27,30

R

Replica

Abutment Level

Ball Abutment
 Abutment Replica Ball Abutment NP/RP 29114 45,54

Easy Abutment™
 Abutment Replica Easy Abutment™ NP 30042 34,54
 Abutment Replica Easy Abutment™ RP 29504 34,54
 Abutment Replica Easy Abutment™ WP 29505 34,54
 Abutment Replica
 Easy Abutment™ 6 mm/Brånemark System® WP 29996 34,54

Multi-unit Abutment
 Abutment Replica Multi-unit 5/pkg 29110 24,53
 Abutment Replica Multi-unit 31161 24,53
 Abutment Replica Multi-unit Brånemark System® WP 31162 24,53

Snappy Abutment™
 Abutment Replica Snappy Abutment™ NP 32368 20,54
 Abutment Replica Snappy Abutment™ RP 32369 20,54
 Abutment Replica Snappy Abutment™ NobRpl WP 32370 20,54
 Abutment Replica
 Snappy Abutment™ NobRpl 6.0/Bmk Syst WP 32371 20,54

Implant Level

Implant Replica NobRpl NP 29498 53
 Implant Replica NobRpl NP 20/pkg 29499 53
 Implant Replica NobRpl NP 29500 53
 Implant Replica NobRpl RP 20/pkg 29501 53
 Implant Replica NobRpl WP 29502 53
 Implant Replica NobRpl WP 20/pkg 29503 53
 Implant Replica NobRpl 6.0 29995 53
 Implant Replica Brånemark System® NP 31158 53
 Implant Replica Brånemark System® RP 5/pkg 29108 53
 Implant Replica Brånemark System® RP 31159 53
 Implant Replica Brånemark System® WP 31160 53

S

Screwdrivers

Manual
 Screwdriver Manual Ball Abutment 22 mm 29026 57
 Screwdriver Manual Unigrip™ 20 mm 29148 57
 Screwdriver Manual Unigrip™ 28 mm 29149 57
 Screwdriver Manual Unigrip™ 36 mm 29150 57
 Screwdriver Manual Multi-unit 25 mm 29156 57
 Screwdriver Manual Multi-unit
 Brånemark System® WP 25 mm 29157 57

Machine

Screwdriver Machine Ball Abutment 24 mm 29027 57
 Screwdriver Machine Unigrip™ 20 mm 29151 57
 Screwdriver Machine Unigrip™ 25 mm 29152 57
 Screwdriver Machine Unigrip™ 30 mm 29153 57
 Screwdriver Machine Unigrip™ 35 mm 29154 57
 Screwdriver Machine Multi-unit 21mm 29158 57
 Screwdriver Machine Multi-unit
 Brånemark System® WP 20 mm 29159 57

Screwdriver/Activator 29163 57

T

Temporary Component

Titanium
 Temporary Abutment Engaging
 Brånemark System® NP 29028 5
 Temporary Abutment Engaging
 Brånemark System® RP 29030 5
 Temporary Abutment Engaging
 Brånemark System® WP 29032 5
 Temporary Abutment Non-Engaging
 Brånemark System® NP 29029 5
 Temporary Abutment Non-Engaging
 Brånemark System® RP 29031 5

| | | |
|--|------------|----|
| Temporary Abutment Non-Engaging | | |
| Brånemark System® WP | 29033 | 5 |
| Temporary Abutment Engaging NobRpl NP | 29034 | 5 |
| Temporary Abutment Engaging NobRpl RP | 29036 | 5 |
| Temporary Abutment Engaging NobRpl WP | 29038 | 5 |
| Temporary Abutment Engaging NobRpl 6.0 | 31456 | 5 |
| Temporary Abutment Non-Engaging NobRpl NP | 29035 | 5 |
| Temporary Abutment Non-Engaging NobRpl RP | 29037 | 5 |
| Temporary Abutment Non-Engaging NobRpl WP | 29039 | 5 |
| Temporary Abutment Non-Engaging NobRpl 6.0 | 31457 | 5 |
| Temporary Coping Multi-unit | 29046 | 5 |
| Temporary Coping Multi-unit Bmk Syst WP | 29047 | 5 |
| Plastic | | |
| Temporary Coping Easy Abutment™ Engaging NP/RP | 28903 | 5 |
| Temporary Coping Easy Abutment™ Engaging WP | 28904 | 5 |
| Temporary Coping Easy Abutment™ Engaging | | |
| Ø6mm/Brånemark System® WP | 28905 | 5 |
| Temporary Abutment Plastic Engaging | | |
| Brånemark System® NP | 30256 | 5 |
| Temporary Abutment Plastic Engaging | | |
| Brånemark System® RP | 30257 | 5 |
| Temporary Abutment Plastic Engaging | | |
| Brånemark System® WP | 30258 | 5 |
| Temporary Abutment Plastic Non-Engaging | | |
| Brånemark System® NP | DCA 1048-0 | 5 |
| Temporary Abutment Plastic Non-Engaging | | |
| Brånemark System® RP | DCA 1050-0 | 5 |
| Temporary Abutment Plastic Non-Engaging | | |
| Brånemark System® WP | DCA 1052-0 | 5 |
| Temporary Abutment Plastic Engaging NobRpl NP | 30259 | 5 |
| Temporary Abutment Plastic Engaging NobRpl RP | 30260 | 5 |
| Temporary Abutment Plastic Engaging NobRpl WP | 30261 | 5 |
| Temporary Abutment Plastic Engaging NobRpl 6.0 | 30262 | 5 |
| Temporary Abutment Plastic Non-Engaging NobRpl NP | 31350 | 5 |
| Temporary Abutment Plastic Non-Engaging NobRpl RP | 31351 | 5 |
| Temporary Abutment Plastic Non-Engaging NobRpl WP | 31352 | 5 |
| Temporary Abutment Plastic Non-Engaging NobRpl 6.0 | 31353 | 5 |
| Temporary Coping Plastic Multi-unit | DCA 468-0 | 5 |
| Temporary Coping Plastic Multi-unit Bmk Syst WP | DCA 705-0 | 5 |
| Try-In Abutment | | |
| NobelReplace™ Try-in Abutment Kit | 32414 | 51 |
| Brånemark System® Try-in Abutment Kit | 32415 | 51 |
| Try-in Abutments NobRpl NP | 32416 | 51 |
| Try-in Abutments NobRpl RP | 32417 | 51 |
| Try-in Abutments NobRpl WP | 32418 | 51 |
| Try-in Abutments NobRpl 6.0 | 32419 | 51 |
| Try-in Abutments Bmk Syst NP | 32420 | 51 |
| Try-in Abutments Bmk Syst RP | 32421 | 51 |
| Try-in Abutments Bmk Syst WP | 32422 | 51 |
| Try-in Abutment Kit Box | 32429 | 51 |
| W | | |
| Wax-up Sleeve | | |
| Wax-up Sleeve for Astra Tech® 3.5ST | 33553 | 30 |
| Wax-up Sleeve for Astra Tech® 4.0ST | 33554 | 30 |
| Wax-up Sleeve for Astra Tech® 4.5/5.0ST | 33555 | 30 |
| Wax-up Sleeve for Camlog® 3.3 | 33567 | 30 |
| Wax-up Sleeve for Camlog® 3.8 | 33568 | 30 |
| Wax-up Sleeve for Camlog® 4.3 | 33569 | 30 |
| Wax-up Sleeve for Camlog® 5.0/6.0 | 33570 | 30 |
| Procera® Wax-up Sleeve Non-Engaging Octagon 4.8 | 32005 | 30 |
| Procera® Wax-up Sleeve Non-Engaging Octagon 6.5 | 32006 | 30 |
| Procera Wax-Up Sleeve Engaging Octagon 4.8 | 31983 | 30 |



our qualifications are

your security

Achievements

- Inheritors and developers of the work of Professor Bränemark – founder of modern implantology. World leaders in the field
- Providers of the most comprehensive and flexible crown, bridge and implant solutions in the world
- Creators of unique biocompatible material TiUnite® for optimal osseointegration, Immediate Function™ and Soft Tissue Integration™
- Creators of unique Procera® System and CAD/CAM dentistry

- FDA cleared for Immediate Function™ (except 3.0 and Zygoma)
- FDA cleared for Teeth-In-An-Hour™ in 2004

Quality

- Zero non-conformities in 2004 FDA inspection of Nobel Biocare production units in Göteborg, Karlskoga and Stockholm

Research

- Formal collaboration with over 50 academic institutions and 600 independent scientists around the world

- More clinical studies on immediate or early loading than all other competitors combined (Medline Feb 2005)
- More prospective clinical studies with at least 5-year follow-up than all other competitors combined (Berglund et al 2002)

Support

- 250,000 customers trained in 40 countries during 2005
- Own sales organizations with local Nobel Biocare staff in 30 countries

AUSTRALIA

Nobel Biocare Australia Pty. Ltd.
Phone: +61 2 9412 11 44

BELGIUM

Nobel Biocare Benelux
Phone: +32 2 467 41 70

CANADA

Nobel Biocare Canada Inc.
Phone: +1-905-762-3500
Toll free: +1-800-263-4017

DENMARK

Nobel Biocare Danmark A/S
Phone: +45 39 40 48 46

FINLAND

Nobel Biocare Suomi Oy
Phone: + 358 9 323 99 33

NETHERLANDS

Nobel Biocare Benelux B.V.
Phone: +31 30 635 49 49

HONG KONG

Nobel Biocare Asia Ltd.
Phone: +(852) 2-845-1266/14 12

NORWAY

Nobel Biocare Norge AS
Phone: + 47 22 99 91 80

POLAND

Nobel Biocare Polska Sp. z o.o.
Phone: +48 22 874 59 44

SOUTH AFRICA

Nobel Biocare South Africa (Pty) Ltd
Phone: +27 11 802 0112

SWEDEN

Nobel Biocare AB
Phone: +46 31 335 49 00

UNITED KINGDOM

Nobel Biocare UK Limited
Phone: +44 (0) 1895 430 650

USA

Nobel Biocare USA LLC.
Phone: +1-714-282-4800
Toll free: +1-800-993-8100
Cust. support: +1-800-322-5001



SOS-CHILDREN'S VILLAGES



Nobel Biocare cares about the environment and all production units are certified according to Environmental Management System ISO 14001

www.nobelbiocare.com

